



**OVER 60?**

Secure this property  
for up to **59% less!**

**Price**

**£475,000**

**Freehold**

4x  2x  2x 

**Keefe Close, Bluebell  
Hill Village, Chatham,  
Kent, ME5**

*Wards*  
Helping you move forwards





## Main features

- **Spacious detached house**
- **Sought after location in Blue Bell Hill village**
- **Situated in a cul-de-sac**
- **En-suite to Bedroom 1, family bathroom and downstairs cloakroom**
- **Great motorway connections to London**

## Accommodation

### GROUND FLOOR

Porch  
Hallway  
Cloakroom  
Lounge: 18'0 x 14'5 (5.49m x 4.40m)  
Dining Room: 9'4 x 8'4 (2.85m x 2.54m)  
Kitchen: 14'7 x 8'4 (4.45m x 2.54m)  
Conservatory: 9'9 x 9'2 (2.97m x 2.80m)

### FIRST FLOOR

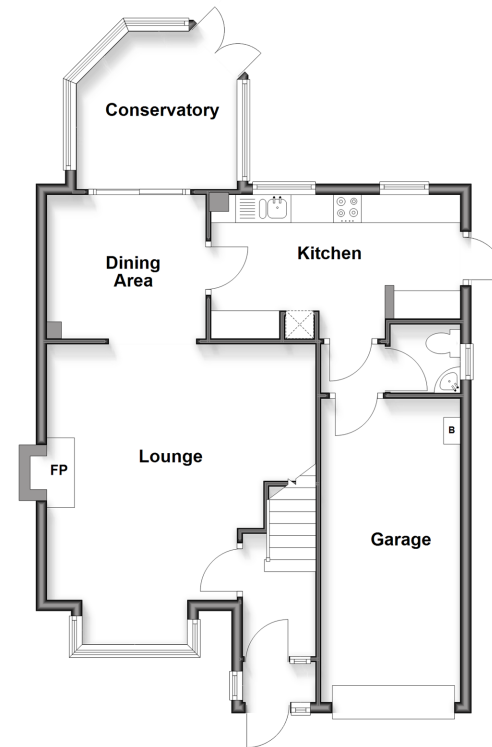
Landing  
Bedroom 1: 12'9 x 12'2 (3.89m x 3.71m)  
En-Suite Shower Room  
Bedroom 2: 12'1 x 8'2 (3.69m x 2.49m)  
Bedroom 3: 9'3 x 7'9 (2.82m x 2.36m)  
Bedroom 4: 8'8 x 8'3 (2.64m x 2.52m)  
Family Bathroom

### OUTSIDE

Front Garden  
Driveway and Integral Garage  
Rear Garden

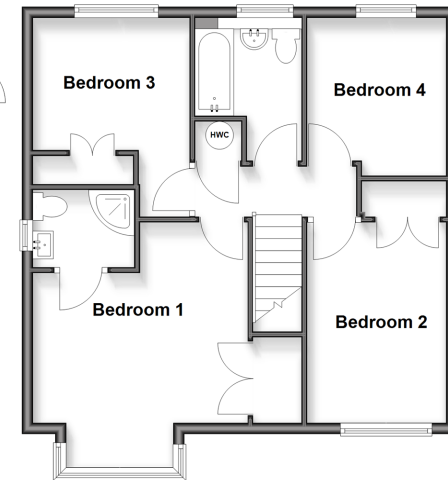
### Ground Floor

Approx. 70.5 sq. metres (759.2 sq. feet)



### First Floor

Approx. 55.7 sq. metres (599.4 sq. feet)



**Call Walderslade - 01634 865661 ■ [wardsof Kent.co.uk](http://wardsof Kent.co.uk)**

- Legal advice should be taken to verify fixtures/fittings, planning, alterations and/or lease details
- Appliances & services are untested, dimensions are approximate and floor plans are not to scale
- Through a Homewise Home For Life Plan people aged 60+ can secure this property for up to 59% less, by purchasing a Lifetime Lease.



12144412/20250324/ML/AH