



OVER 60?

Secure this property
for up to **59% less!**

Price

£550,000

Freehold

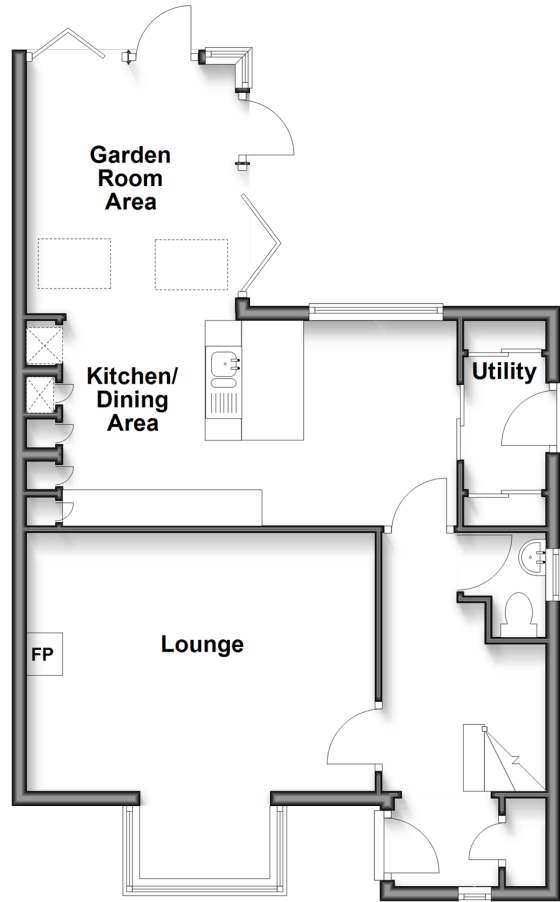
5x  2x  3x 

**Silver Tree Close,
Walderslade, Chatham,
Kent, ME5**

Wards
Helping you move forwards

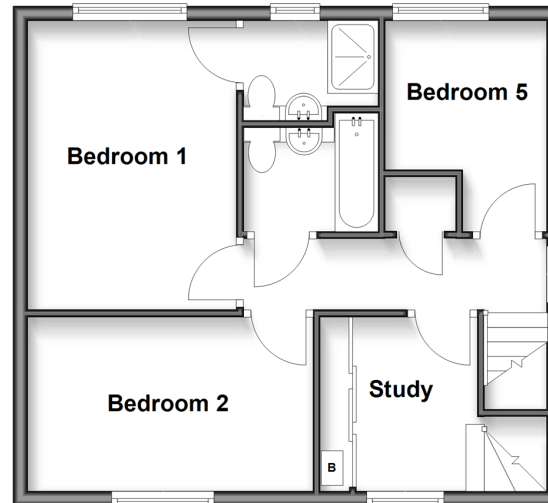
Ground Floor

Approx. 60.8 sq. metres (654.3 sq. feet)



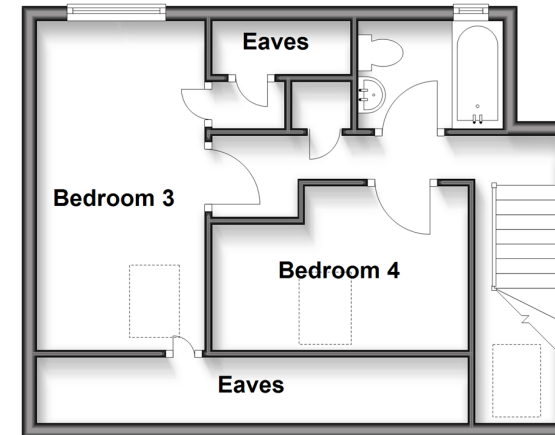
First Floor

Approx. 46.7 sq. metres (503.0 sq. feet)



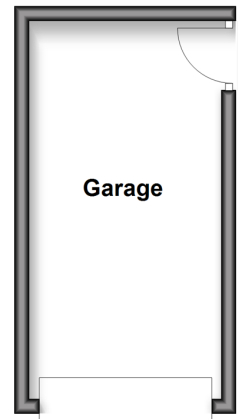
Second Floor

Approx. 38.8 sq. metres (417.3 sq. feet)



Outbuilding

Approx. 14.0 sq. metres (150.3 sq. feet)



Accommodation

GROUND FLOOR

Entrance Porch
Entrance Hall
Cloakroom
Lounge: 16'1 x 11'7 (4.91m x 3.53m)
Kitchen/Dining Area : 19'4 x 9'3 (5.90m x 2.82m)
Garden Room Area : 10'9 x 10'7 (3.28m x 3.23m)

FIRST FLOOR

Landing
Study Area : 8'4 x 6'4 (2.54m x 1.93m)
Bedroom 1: 12'9 x 8'5 (3.89m x 2.57m)

En suite shower room

Bedroom 2: 12'9 x 8'5 (3.89m x 2.57m)
Bedroom 5: 9'5 x 6'7 (2.87m x 2.01m)
Family Bathroom: 6'1 x 5'5 (1.86m x 1.65m)

SECOND FLOOR

Landing
Bedroom 3: 15'3 x 7'6 (4.65m x 2.29m)
Eaves
Bedroom 4: 11'5 x 5'8 (3.48m x 1.73m)
Eaves
Bathroom : 6'4 x 5'8 (1.93m x 1.73m)

OUTBUILDING

Garage

OUTSIDE

Driveway
Rear Garden



Main features

- Executive style detached house
- Larger accommodation over three floors
- Excellent condition throughout
- Large driveway providing parking for several cars
- Great location, always sought after
- Short drive to M2/M20 motorway connections to London and the Kent coast



Nearest Schools

Primary Schools: Tunbury Primary 0.5 miles, Swingate Primary 0.5 miles, St Benedict's RC Primary 0.7 miles

Secondary Schools: Greenacre School 1.3 miles, Walderslade Girls' School 1.5 miles, Bradfields School 1.7



Transport Information

Train Stations: Rochester 3.8 miles, Gillingham 3.9 miles, Barming 4.0 miles



Address

Silver Tree Close, Walderslade, Chatham, Kent, ME5



Directions

For directions to this property please contact us.



Wards
Helping you move forwards

Call Walderslade Branch 01634 865661 ■ wardsofkent.co.uk



- The seller is a person connected with Wards as defined in the Estate Agents Act 1979
- Appliances & services are untested, dimensions are approximate and floor plans are not to scale

- Legal advice should be taken to verify fixtures/fittings, planning, alterations and/or lease details
- Through a Homewise Home For Life Plan people aged 60+ can secure this property for up to 59% less, by purchasing a Lifetime Lease.



12128490/20250405/AH/PP