



Price
£450,000

Freehold

4x  2x  2x 

**Spencer Close,
Walderslade, Chatham,
Kent, ME5**

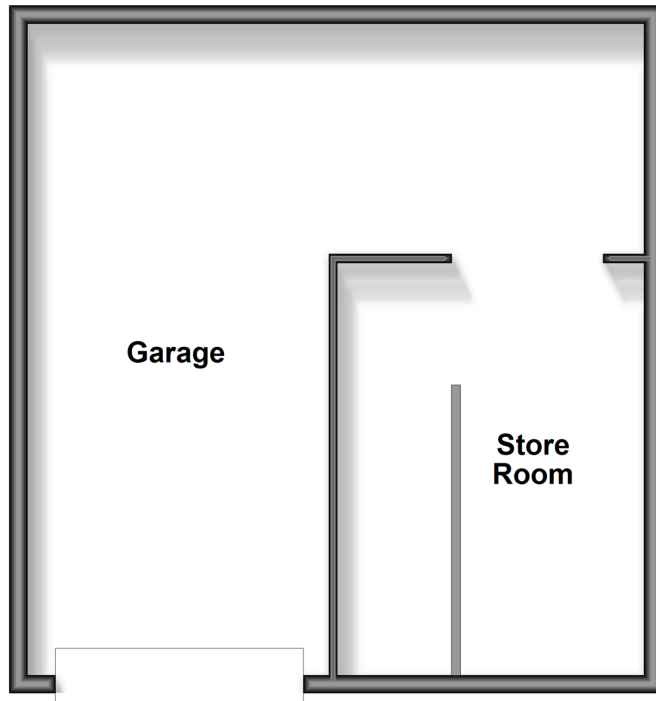
OVER 60?

Secure this property
for up to **59% less!**

Wards
Helping you move forwards

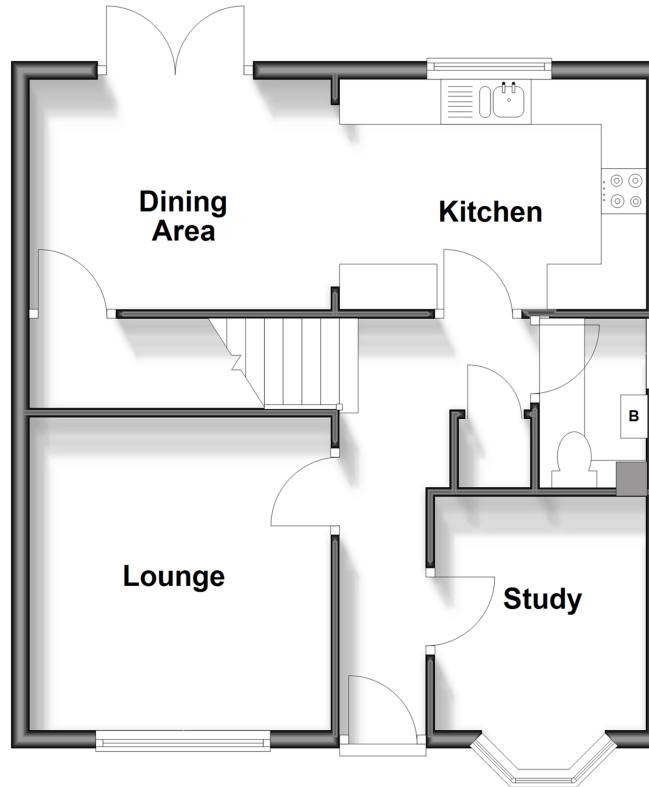
Lower Ground Floor

Approx. 49.4 sq. metres (531.4 sq. feet)



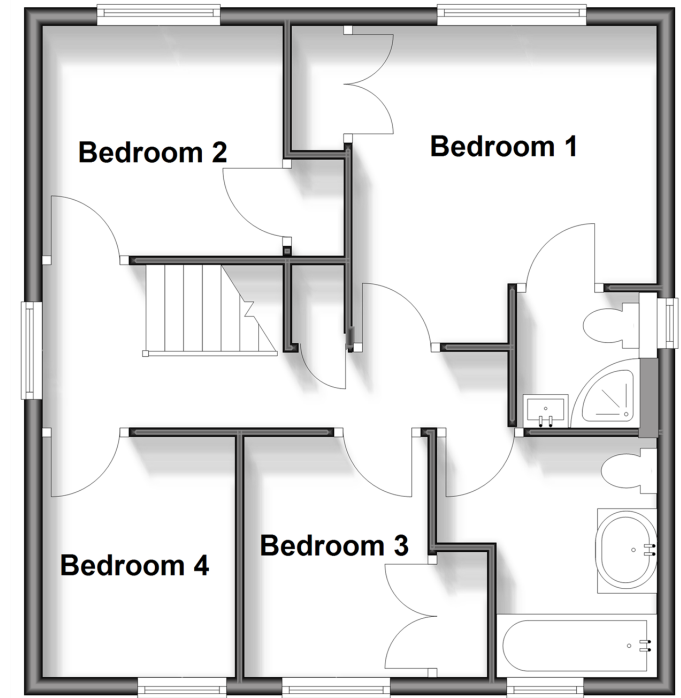
Ground Floor

Approx. 49.5 sq. metres (532.7 sq. feet)



First Floor

Approx. 48.7 sq. metres (524.3 sq. feet)



Accommodation

LOWER GROUND FLOOR

Garage
Store Room

GROUND FLOOR

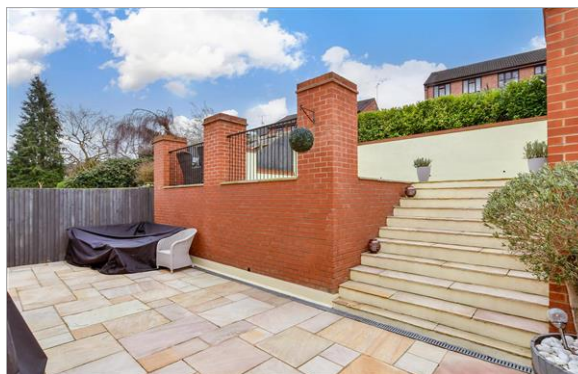
Entrance Hall
Lounge : 16'0 x 11'0 (4.88m x 3.36m)
Study: 8'5 x 7'7 (2.57m x 2.31m)
Cloakroom

FIRST FLOOR

Landing
Bedroom 1 : 11'9 x 10'7 (3.58m x 3.23m)
En Suite Shower
Bedroom 2: 9'4 x 8'8 (2.85m x 2.64m)
Bedroom 3: 8'6 x 7'0 (2.59m x 2.14m)
Bedroom 4 : 9'1 x 6'8 (2.77m x 2.03m)
Family Bathroom

OUTSIDE

Driveway
Rear Garden



Main features

- Immaculate detached family spacious house
- Family bathroom, en suite and downstairs cloakroom
- Driveway, garage and store room
- Low maintenance rear garden
- Chain free and close to amenities and a short drive to the M2/M20 motorway links



Nearest Schools

Primary Schools: Maundene School 0.3 miles, St Benedict's RC Primary 1.0 miles, Kingfisher Community Primary 1.1 miles

Secondary Schools: Victory Academy 1.3 miles, The



Transport Information

Train Stations: Halling 3.6 miles, Snodland 3.7 miles, Rainham 3.7 miles



Address

Spencer Close, Walderslade, Chatham, Kent, ME5



Directions

For directions to this property please contact us.



Call Walderslade Branch 01634 865661 ■ wardsofkent.co.uk



- Legal advice should be taken to verify fixtures/fittings, planning, alterations and/or lease details
- Appliances & services are untested, dimensions are approximate and floor plans are not to scale
- Through a Homewise Home For Life Plan people aged 60+ can secure this property for up to 50% less, by purchasing a Lifetime Lease.



12144193/20250818/ML/AH