



Price
£350,000

Freehold

3x  2x  2x 

**Forestdale Road,
Chatham, Kent, ME5**

OVER 60?

Secure this property
for up to **59% less!**

Wards
Helping you move forwards



Main features

- A nicely presented semi detached property in a great location
- Conservatory
- Garage has been converted to a ground floor bedroom with en suite shower
- Close to M2/M20 motorway connections
- Amenities a short drive away

Accommodation

GROUND FLOOR

Lounge : 14'3 x 12'0 (4.35m x 3.66m)

Kitchen : 11'9 x 8'0 (3.58m x 2.44m)

Conservatory : 11'1 x 9'6 (3.38m x 2.90m)

Bedroom 3: 9'4 x 7'1 (2.85m x 2.16m)

En Suite Shower Room

FIRST FLOOR

Landing

Bedroom 1 : 12'0 x 9'6 (3.66m x 2.90m)

Bedroom 2 : 12'0 x 8'0 (3.66m x 2.44m)

Family Bathroom

OUTSIDE

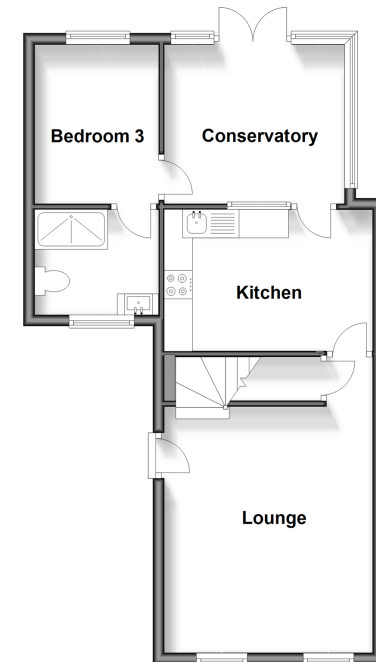
Driveway

Rear Garden

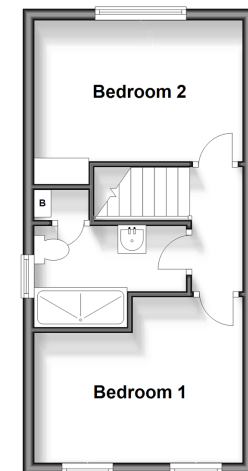
Call Walderslade - 01634 865661 ■ wardsof Kent.co.uk

- Legal advice should be taken to verify fixtures/fittings, planning, alterations and/or lease details
- Appliances & services are untested, dimensions are approximate and floor plans are not to scale
- Through a Homewise Home For Life Plan people aged 60+ can secure this property for up to 59% less, by purchasing a Lifetime Lease.

Ground Floor
Approx. 49.0 sq. metres (527.9 sq. feet)



First Floor
Approx. 28.8 sq. metres (310.4 sq. feet)



12144375/20250120/ML/MC