



OVER 60?

Secure this property
for up to **59% less!**

Price

£265,000

Freehold

3x  1x  1x 

**Broadlands Drive,
Walderslade, Chatham,
Kent, ME5**

Wards
Helping you move forwards



Main features

- A lovely home, perfect for a first time buyer or family
- This property is well presented throughout
- Cul-de-sac position
- Garage en-bloc
- Easy access to amenities

Accommodation

GROUND FLOOR

Entrance Hall

Lounge: 15'8 x 11'2 (4.78m x 3.41m)

Kitchen/Diner: 15'8 x 11'4 (4.78m x 3.46m)

FIRST FLOOR

Landing

Bedroom 1: 11'3 x 8'8 (3.43m x 2.64m)

Bedroom 2: 8'5 x 8'5 (2.57m x 2.57m)

Bedroom 3: 8'2 x 6'8 (2.49m x 2.03m)

Family Bathroom: 7'0 x 5'5 (2.14m x 1.65m)

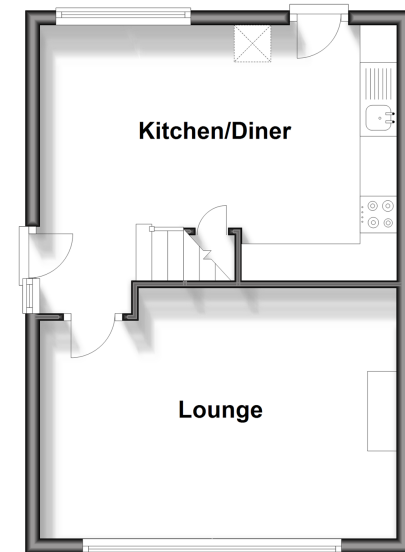
OUTSIDE

Front and Rear Garden

Garage En-Bloc

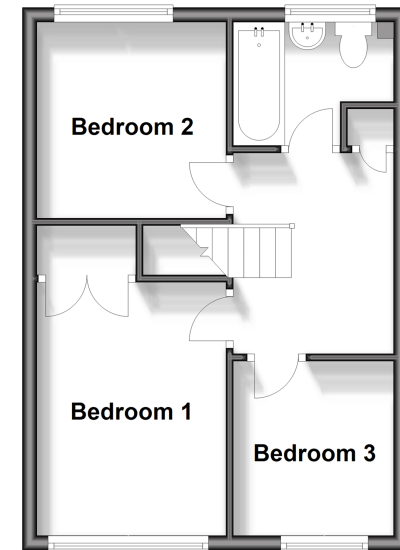
Ground Floor

Approx. 34.0 sq. metres (365.6 sq. feet)



First Floor

Approx. 34.0 sq. metres (365.6 sq. feet)



Call Walderslade - 01634 865661 ■ wardsofkent.co.uk

- Legal advice should be taken to verify fixtures/fittings, planning, alterations and/or lease details
- Appliances & services are untested, dimensions are approximate and floor plans are not to scale
- Through a Homewise Home For Life Plan people aged 60+ can secure this property for up to 59% less, by purchasing a Lifetime Lease.



12142696/20250212/AH/AH