



**Guide Price**  
**£450,000**

**Freehold**

4x  2x  2x 

**Peacock Rise,  
Walderslade, Chatham,  
Kent, ME5**

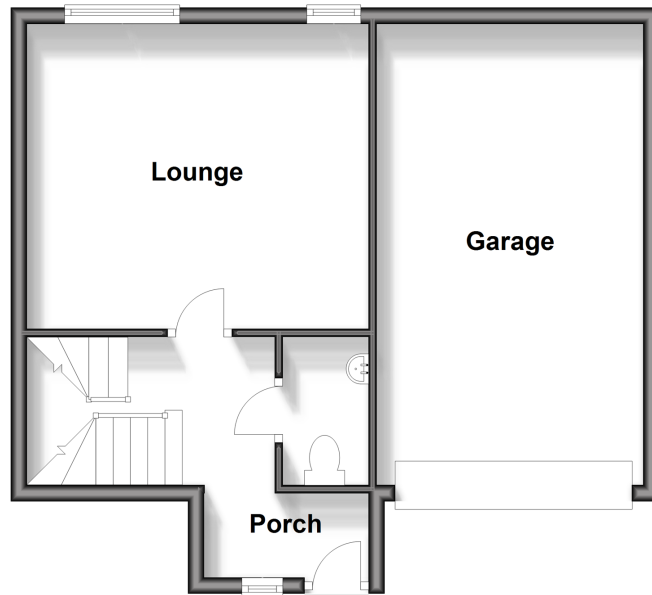
**OVER 60?**

Secure this property  
for up to **59% less!**

*Wards*  
Helping you move forwards

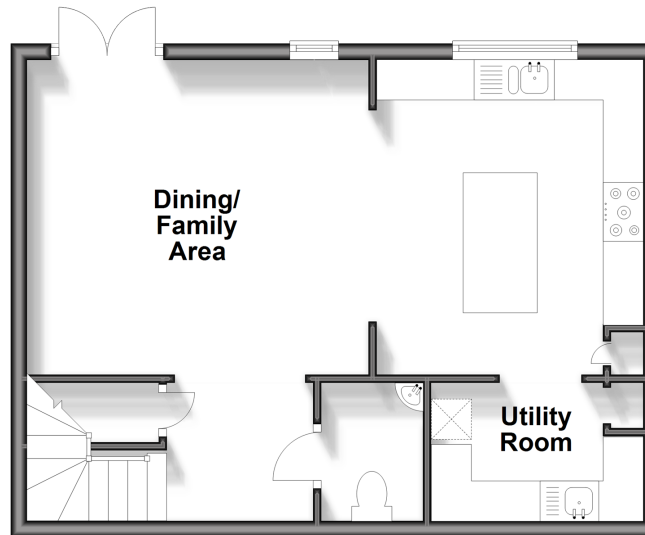
## Ground Floor

Approx. 46.4 sq. metres (499.2 sq. feet)



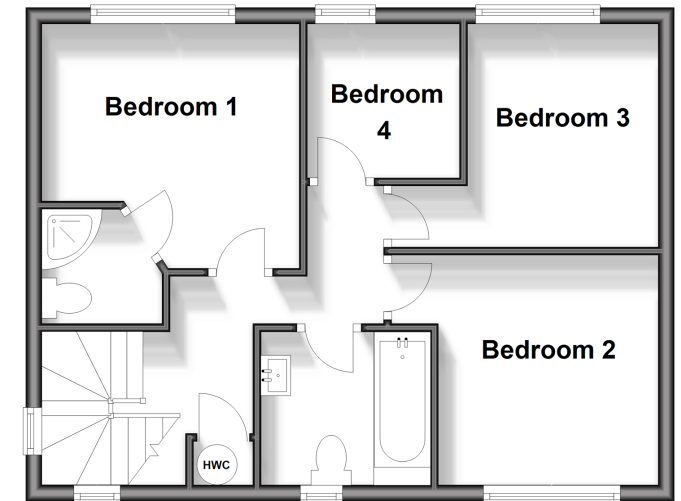
## Lower Ground Floor

Approx. 44.1 sq. metres (474.2 sq. feet)



## First Floor

Approx. 44.0 sq. metres (473.8 sq. feet)



## Accommodation

### GROUND FLOOR

Porch  
Hallway  
Lounge: 14'4 x 13'2 (4.37m x 4.02m)  
Cloakroom

### LOWER GROUND FLOOR

Dining/Family Area: 13'9 x 13'6 (4.19m x 4.12m)  
Kitchen: 13'1 x 11'0 (3.99m x 3.36m)  
Utility Area: 8'6 x 5'7 (2.59m x 1.70m)

### FIRST FLOOR

Landing  
Bedroom 1: 10'8 x 10'4 (3.25m x 3.15m)  
En-Suite Shower Room  
Bedroom 2: 9'4 x 9'1 (2.85m x 2.77m)  
Bedroom 3: 10'2 x 8'6 (3.10m x 2.59m)  
Bedroom 4: 6'8 x 6'4 (2.03m x 1.93m)

### OUTSIDE

Front Garden  
Integral Garage: 20'3 x 15'4 (6.18m x 4.68m)  
Off-Road Parking  
Rear Garden





## Main features

- Spacious detached home with en-suite to Bedroom 1
- Double garage and off-road parking
- Lounge and sitting room for flexible living
- Quiet cul-de-sac position with beautiful views
- Short drive to motorway links M2/M20 to London and the Kent coast



### Nearest Schools

Primary: Walderslade 0.6 miles, Lordswood Junior School 0.7 miles, Maundene School 0.7 miles

Secondary: Walderslade Girls' 1.5 miles, Greenacre 1.6 miles, Bradfields 1.7 miles



### Transport Information

Train Stations: Chatham 3.6 miles, Rainham 3.7 miles, Halling 3.7 miles



### Address

Peacock Rise, Walderslade, Chatham, Kent, ME5



### Directions

For directions to this property please contact us.





**Wards**  
Helping you move forwards

Call Walderslade Branch 01634 865661 ■ [wardsofkent.co.uk](http://wardsofkent.co.uk)



■ Legal advice should be taken to verify fixtures/fittings, planning, alterations and/or lease details ■ Appliances & services are untested, dimensions are approximate and floor plans are not to scale  
■ Through a Homewise Home For Life Plan people aged 60+ can secure this property for up to 59% less, by purchasing a Lifetime Lease.



12130149/20250220/ML/AH