



Price
£485,000

Freehold

4x  2x  2x 

**Setford Road, Lords
Wood, Chatham, Kent,
ME5**

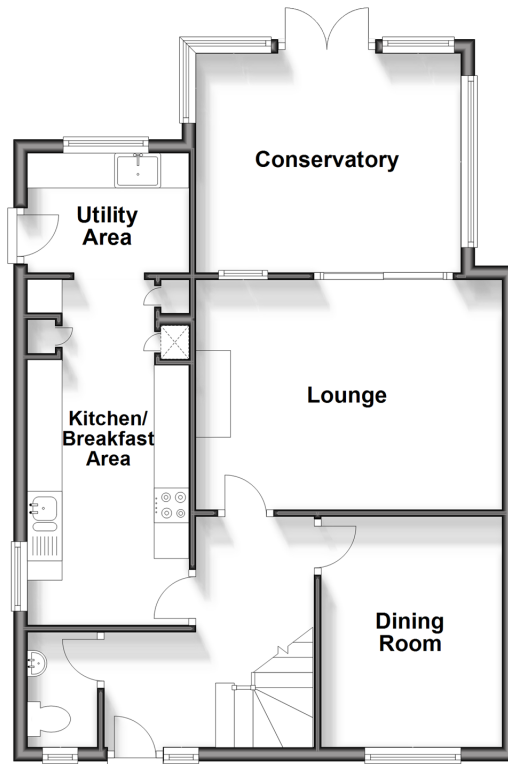
OVER 60?

Secure this property
for up to **59% less!**

Wards
Helping you move forwards

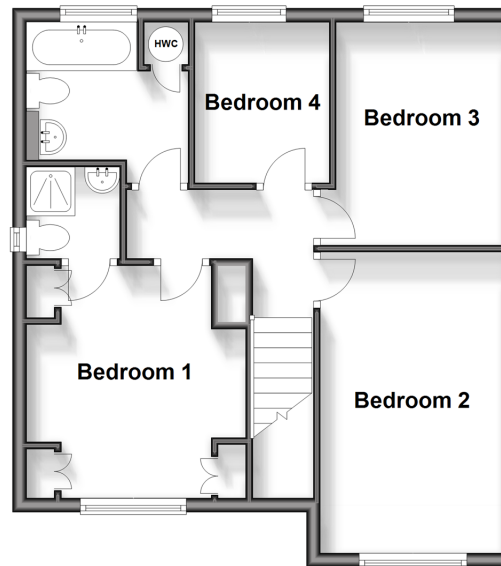
Ground Floor

Approx. 62.9 sq. metres (677.0 sq. feet)



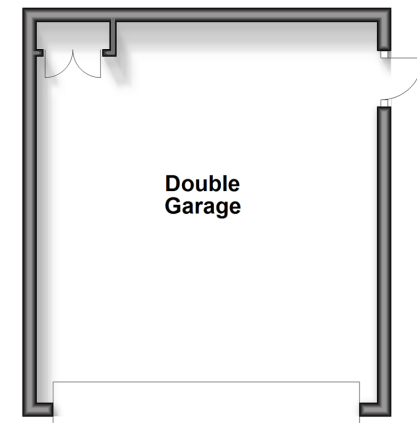
First Floor

Approx. 49.0 sq. metres (528.0 sq. feet)



Outbuilding

Approx. 26.9 sq. metres (289.2 sq. feet)



Accommodation

GROUND FLOOR

Entrance Hall

Cloakroom

Dining Room : 10'0 x 8'3 (3.05m x 2.52m)

Lounge : 14'9 x 11'0 (4.50m x 3.36m)

Kitchen/Breakfast Area : 16'4 x 7'5 (4.98m x 2.26m) narrowing to 7'6 x 4'9 (2.29m x 1.45m)

Utility Area

Conservatory : 12'4 x 11'0 (3.76m x 3.36m)

FIRST FLOOR

Landing

Bedroom 1 : 11'2 x 10'9 (3.41m x 3.28m)

En Suite Shower Room : 5'2 x 4'9 (1.58m x 1.45m)

Bedroom 2 : 13'8 x 8'7 (4.17m x 2.62m)

Bedroom 3 : 8'1 x 6'5 (2.47m x 1.96m)

Bedroom 4 : 7'7 x 6'6 (2.31m x 1.98m)

OUTSIDE

Front Garden

Driveway

Garage : 17'7 x 17'1 (5.36m x 5.21m)

Rear Garden



Main features

- Executive style detached house
- Corner plot with low maintenance rear garden
- Double garage and driveway for up to 3 cars; perfect for the growing family
- Short walk or drive to local shops and schools
- Sought after location and short drive to M2/M20 motorway connections



Nearest Schools

Primary Schools: Kingfisher Community Primary 0.8 miles, Walderslade Primary 0.9 miles, Lordswood Junior School 1.1 miles

Secondary Schools: Holcombe Grammar School 1.3 miles,



Transport Information

Train Stations: Chatham 3.3 miles, Gillingham 3.6 miles, Cuxton 3.8 miles



Address

Setford Road, Lords Wood, Chatham, Kent, ME5



Directions

For directions to this property please contact us.



Wards
Helping you move forwards

Call Walderslade Branch 01634 865661 ■ wardsofkent.co.uk



■ Legal advice should be taken to verify fixtures/fittings, planning, alterations and/or lease details ■ Appliances & services are untested, dimensions are approximate and floor plans are not to scale
■ Through a Homewise Home For Life Plan people aged 60+ can secure this property for up to 59% less, by purchasing a Lifetime Lease.



12144293/20241228/FA/PP