



**Guide Price**  
**£550,000**

**Freehold**

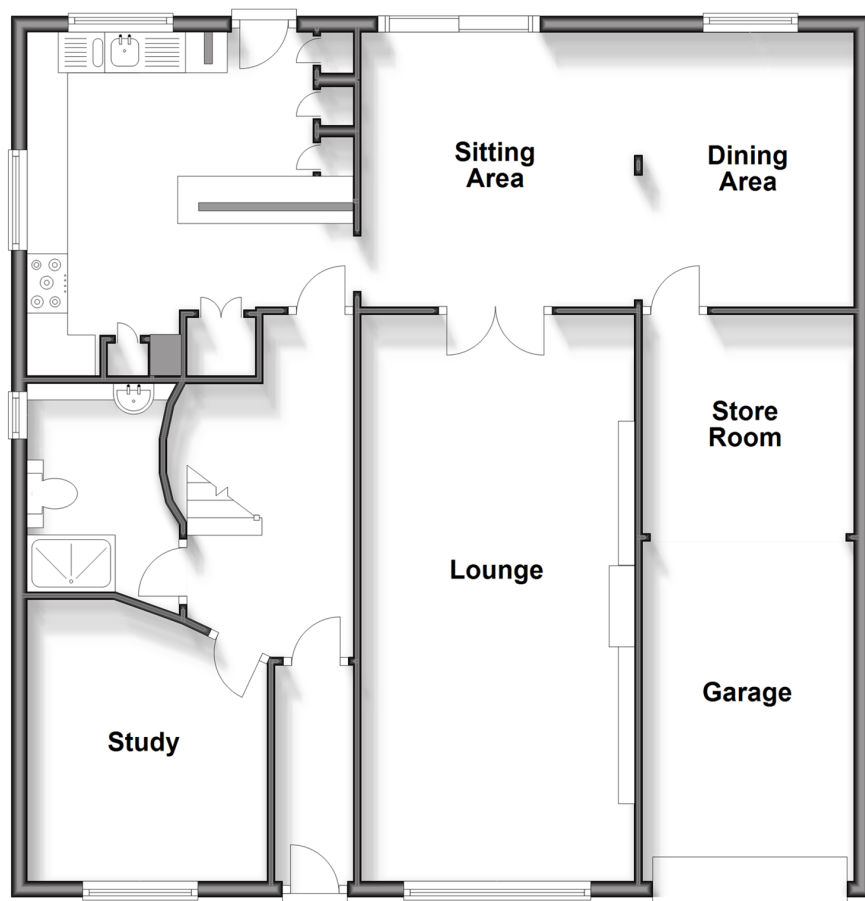
4x  2x  2x 

**Lords Wood Lane, Lords  
Wood, Chatham, Kent,  
ME5**

*Wards*  
Helping you move forwards

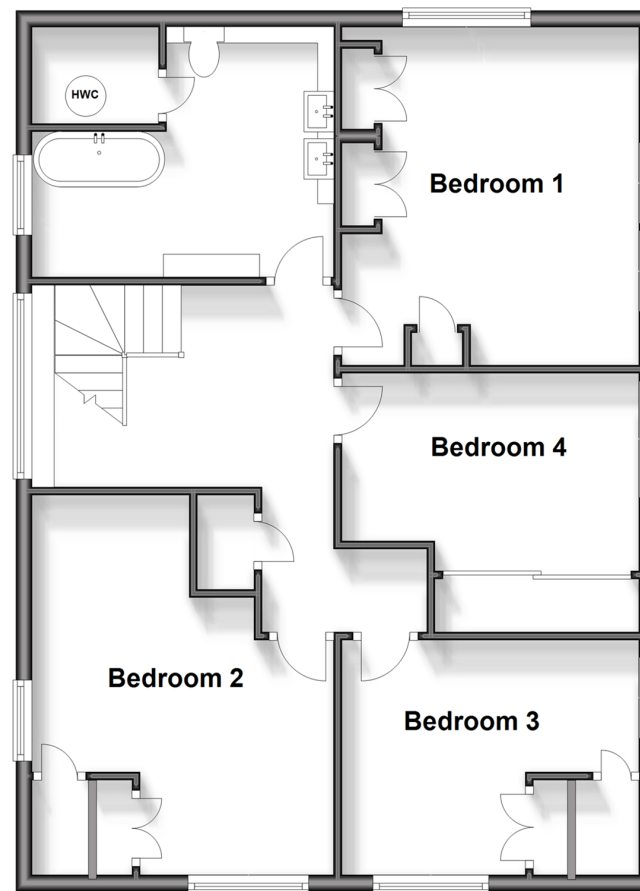
## Ground Floor

Approx. 106.9 sq. metres (1150.5 sq. feet)



## First Floor

Approx. 78.5 sq. metres (844.9 sq. feet)



## Accommodation

### GROUND FLOOR

Entrance Hallway

Study: 11'0 x 9'6 (3.36m x 2.90m)

Shower Room : 8'3 x 6'1 (2.52m x 1.86m)

Lounge: 23'9 x 10'8 (7.24m x 3.25m)

Kitchen : 14'2 x 13'8 (4.32m x 4.17m)

Dining Area/Sitting Area : 19'4 x 10'9  
(5.90m x 3.28m)

### FIRST FLOOR

Landing

Bedroom 1 : 15'1 x 12'2 (4.60m x 3.71m)

Bedroom 2 : 12'3 x 9'1 (3.74m x 2.77m)

Bedroom 3 : 14'9 into eaves x 12'7 (4.50m  
x 3.84m)

Bedroom 4 : 12'1 x 9'5 (3.69m x 2.87m)

Bathroom : 10'3 x 6'0 (3.13m x 1.83m)

### OUTSIDE

Front Garden

Driveway

Garage/Store Room

Large Rear Garden





## Main features

- Rarely available spacious detached chalet bungalow
- Very large established rear garden
- Driveway providing lots of off road parking
- Short drive to Walderslade Centre with its amenities
- Short drive M2/M20 motorway connections



### Nearest Schools

Primary Schools: Lordswood Junior School 0.7 miles, Kingfisher Community Primary 0.7 miles, St Benedict's RC Primary 0.9 miles

Secondary Schools: Chatham Grammar School for Girls



### Transport Information

Train Stations: Gillingham 3.5 miles, Chatham 3.6 miles, Cuxton 3.7 miles



### Address

Lords Wood Lane, Lords Wood, Chatham, Kent, ME5



### Directions

For directions to this property please contact us.





**Wards**  
Helping you move forwards

Call Walderslade Branch 01634 865661 ■ [wardsofkent.co.uk](http://wardsofkent.co.uk)



■ Legal advice should be taken to verify fixtures/fittings, planning, alterations and/or lease details ■ Appliances & services are untested, dimensions are approximate and floor plans are not to scale



12144321/20250521/AH/PP