



OVER 60?

Secure this property
for up to **59% less!**

Price

£300,000

Freehold

2x  1x  2x 

**Chippendale Close,
Walderslade, Chatham,
Kent, ME5**

Wards
Helping you move forwards



Main features

- Link detached bungalow set in a cul-de-sac location
- Low maintenance front and rear gardens
- Garage and Parking
- Short drive to M2/M20 motorway connections
- No chain

Accommodation

GROUND FLOOR

Lounge : 15'7 x 10'4 (4.75m x 3.15m)

Dining Room : 11'0 x 8'4 (3.36m x 2.54m)

Kitchen : 8'9 x 8'4 (2.67m x 2.54m)

Bedroom 1 : 9'1 x 9'1 (2.77m x 2.77m)

Bedroom 2 : 11'9 x 9'2 (3.58m x 2.80m)

Shower Room

OUTSIDE

Front Garden

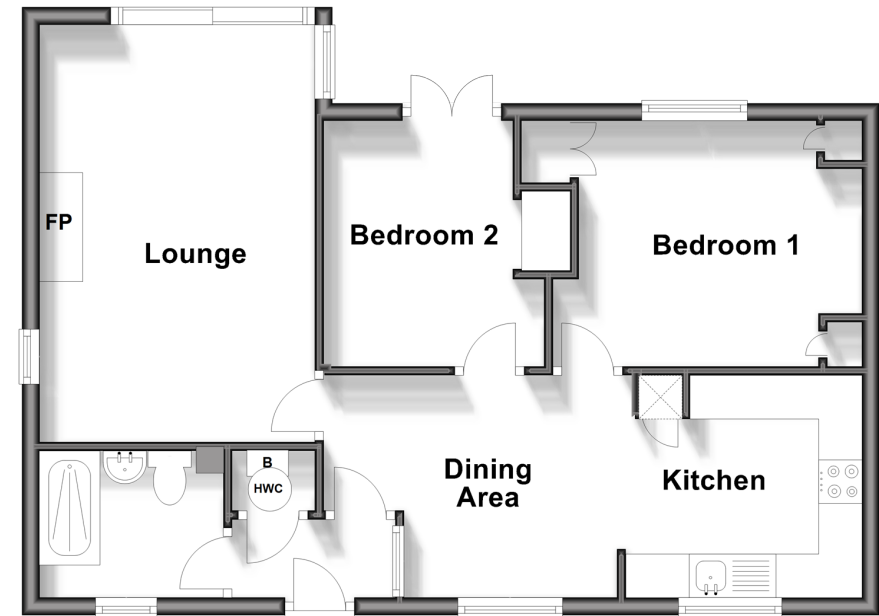
Rear Garden

Driveway

Garage

Ground Floor

Approx. 55.4 sq. metres (596.2 sq. feet)



Call Walderslade - 01634 865661 ■ wardsof Kent.co.uk

- Legal advice should be taken to verify fixtures/fittings, planning, alterations and/or lease details
- Appliances & services are untested, dimensions are approximate and floor plans are not to scale
- Through a Homewise Home For Life Plan people aged 60+ can secure this property for up to 59% less, by purchasing a Lifetime Lease.



12144102/20241105/ML/PP