



Price
£390,000

Freehold

4x  2x  1x 

**Courtfield Avenue,
Lordswood, Chatham,
Kent, ME5**

Wards
Helping you move forwards



Main features

- **Spacious semi detached house benefiting from an en suite**
- **Excellent family oriented location, great access to local schooling**
- **Good sized rooms**
- **Easy access to M2 and M20 motorways**
- **Short drive to both Chatham and Maidstone town centres**

Accommodation

GROUND FLOOR

Entrance Hall

Lounge/Dining Area : 23'1 x 11'3 at widest point (7.04m x 3.43m)

Kitchen : 10'8 x 8'5 (3.25m x 2.57m)

FIRST FLOOR

Landing

Bedroom 1 : 19'5 x 8'7 at widest point (5.92m x 2.62m)

En Suite Shower Room

Bedroom 2 : 11'2 x 11'0 (3.41m x 3.36m)

Bedroom 3 : 11'3 x 10'8 (3.43m x 3.25m)

Bedroom 4 : 7'8 x 7'4 (2.34m x 2.24m)

Family Bathroom : 6'4 x 5'4 (1.93m x 1.63m)

OUTSIDE

Integral Garage : 16'1 x 8'7 (4.91m x 2.62m)

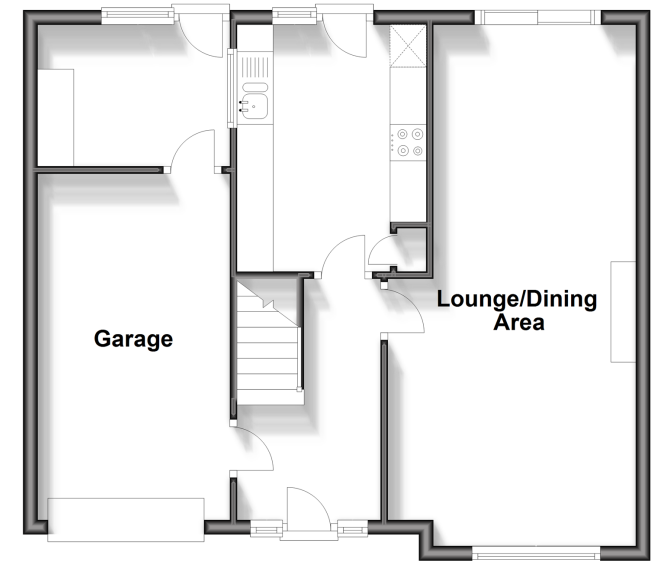
Utility Area (off Garage): 8'8 x 6'5 (2.64m x 1.96m)

Front Garden

Rear Garden

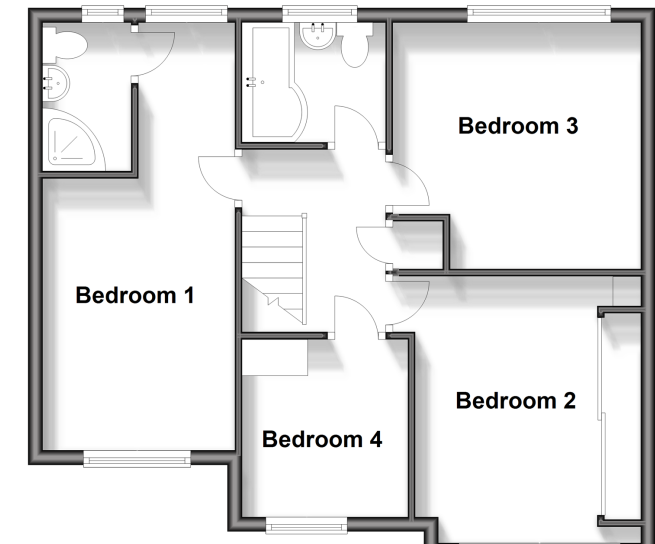
Ground Floor

Approx. 58.0 sq. metres (624.2 sq. feet)



First Floor

Approx. 54.6 sq. metres (587.5 sq. feet)



Call Walderslade - 01634 865661 ■ wardsofkent.co.uk

- Legal advice should be taken to verify fixtures/fittings, planning, alterations and/or lease details
- Appliances & services are untested, dimensions are approximate and floor plans are not to scale



12144305/20250529/ML/SJ