



Price
£325,000

Freehold

2x  1x  1x 

**Olivine Close,
Walderslade Woods,
Chatham, Kent, ME5**

OVER 60?

Secure this property
for up to **59% less!**

Wards
Helping you move forwards



Main features

- Superb link detached in a sought after location
- Excellent cul-de-sac location in a good school catchment area
- Short drive from local amenities
- M2/M20 motorway connections within a few minutes drive
- No chain

Accommodation

GROUND FLOOR

Entrance Hall

Lounge : 12'10 x 12'5 (3.91m x 3.79m)

Kitchen: 12'10 x 9'10 (3.91m x 3.00m)

FIRST FLOOR

Landing

Bedroom 1 : 12'10 x 10'5 (3.91m x 3.18m)

Bedroom 2 : 9'9 x 6'5 (2.97m x 1.96m)

Bathroom : 6'11 x 6'1 (2.11m x 1.86m)

OUTSIDE

Front Garden

Driveway

Garage

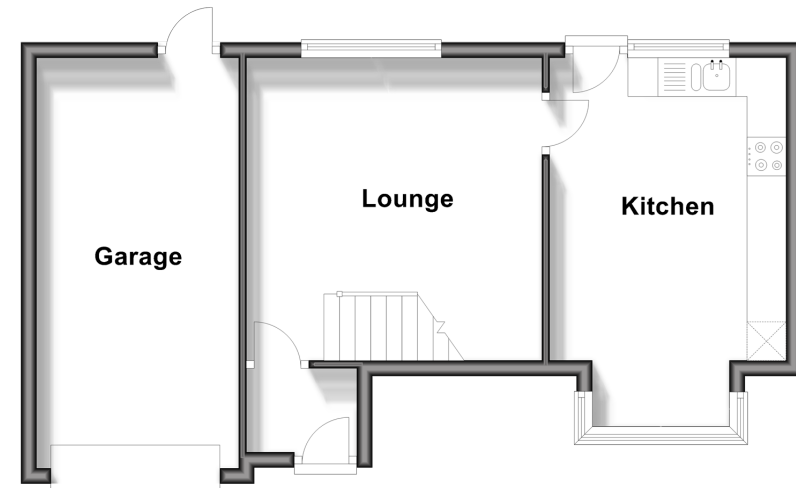
Rear Garden

Call Walderslade - 01634 865661 ■ wardsof Kent.co.uk

- Legal advice should be taken to verify fixtures/fittings, planning, alterations and/or lease details
- Appliances & services are untested, dimensions are approximate and floor plans are not to scale
- Through a Homewise Home For Life Plan people aged 60+ can secure this property for up to 59% less, by purchasing a Lifetime Lease.

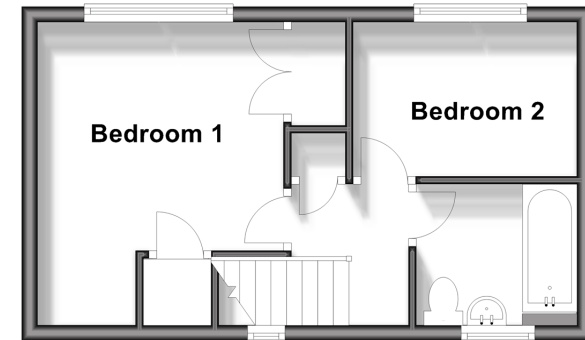
Ground Floor

Approx. 44.5 sq. metres (478.7 sq. feet)



First Floor

Approx. 27.3 sq. metres (294.0 sq. feet)



12143818/20241024/****/PP