



Price
£325,000

Freehold

2x  1x  1x 

**Montfort Road,
Chatham, Kent, ME5**

OVER 60?

Secure this property
for up to **59% less!**

Wards
Helping you move forwards



Main features

- Spacious semi detached Bungalow
- Low maintenance flat garden
- Driveway and detached garage
- Great location within a small cluster of bungalows
- Level plot with access to amenities and a short drive to M2/M20

Accommodation

GROUND FLOOR

Entrance Hallway

Bedroom 2 : 10'10 x 9'0 (3.30m x 2.75m)

Shower Room : 8'10 x 5'5 (2.69m x 1.65m)

Kitchen : 11'4 x 7'7 (3.46m x 2.31m)

Bedroom 1: 12'2 x 10'2 (3.71m x 3.10m)

Lounge : 17'0 x 10'2 (5.19m x 3.10m)

Conservatory : 12'9 x 9'3 (3.89m x 2.82m)

OUTBUILDING

Garage

OUTSIDE

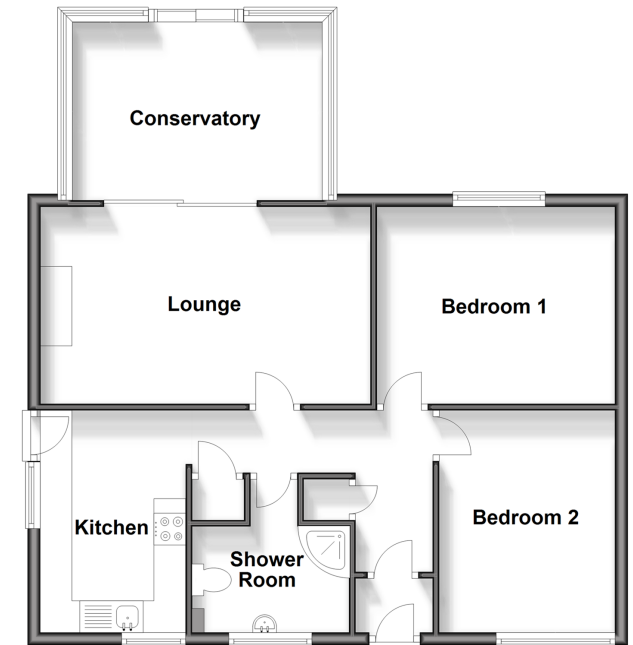
Driveway

Rear Garden

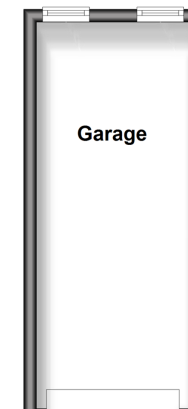
Call Walderslade - 01634 865661 ■ wardsof Kent.co.uk

- Legal advice should be taken to verify fixtures/fittings, planning, alterations and/or lease details
- Appliances & services are untested, dimensions are approximate and floor plans are not to scale
- Through a Homewise Home For Life Plan people aged 60+ can secure this property for up to 59% less, by purchasing a Lifetime Lease.

Ground Floor
Approx. 71.8 sq. metres (772.8 sq. feet)



Outbuilding
Approx. 14.7 sq. metres (158.6 sq. feet)



12144315/20241018/ML/PP