



Price
£120,000

Leasehold

1x  1x  1x 

**Woodlands Court,
Walderslade Road,
Walderslade, Chatham,
Kent, ME5**

Wards
Helping you move forwards



Main features

- A lovely first floor apartment
- Specifically designed for over 60's
- Communal residents lounge
- Communal resident and visitor parking
- Local shops and facilities within a few minutes walk



Accommodation

FIRST FLOOR

Entrance Hall

Bedroom: 13'2 into fitted wardrobes x 8'7 (4.02m x 2.62m)

Shower Room

Lounge/Diner : 17'5 x 10'1 (5.31m x 3.08m)

Kitchen : 7'3 x 7'0 (2.21m x 2.14m)

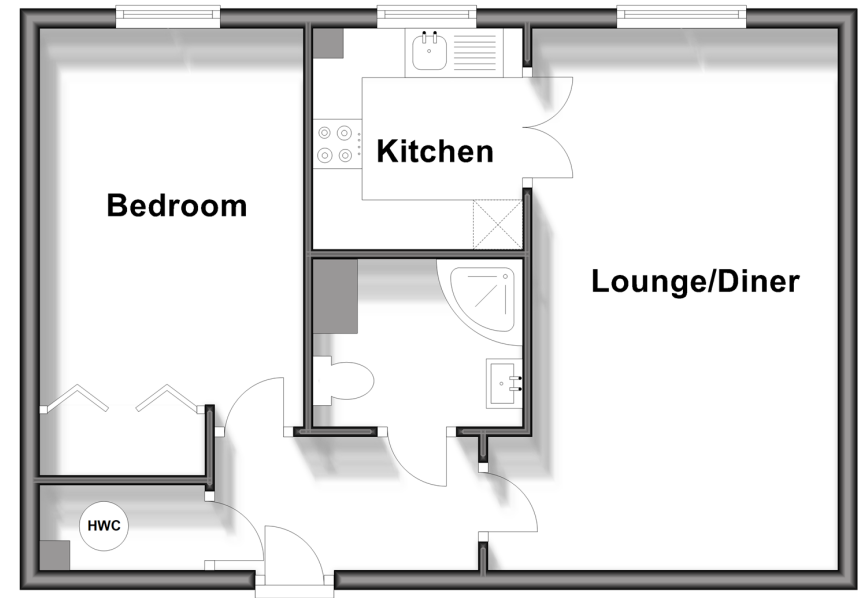
OUTSIDE

Communal garden

Communal parking

First Floor

Approx. 44.3 sq. metres (477.2 sq. feet)



Call Walderslade - 01634 865661 ■ wardsofkent.co.uk

- Legal advice should be taken to verify fixtures/fittings, planning, alterations and/or lease details
- Appliances & services are untested, dimensions are approximate and floor plans are not to scale



12144297/20250212/ML/PP