



Price
£375,000

Freehold

2x  1x  2x 

**Swallow Rise,
Walderslade, Chatham,
Kent, ME5**

Wards
Helping you move forwards



Main features

- Detached new build house in a sought after location
- 10 year new build warranty
- Fully fitted kitchen and bathroom to a high standard
- Carpets and flooring included throughout
- Off street parking for 1 car

Accommodation

SPLIT LEVEL GROUND FLOOR

Entrance Hall

Study/Dining Room: 13'10 x 8'0 (4.22m x 2.44m)

Cloakroom to be fitted

Lounge : 17'7 (5.36m) narrowing to 7'11 (2.41m) x 10'7 (3.23m)

Kitchen : 12'7 x 7'10 (3.84m x 2.39m)

FIRST FLOOR

Bedroom 1 : 11'3 x 10'9 (3.43m x 3.28m)

Bedroom 2 : 12'1 x 7'1 (3.69m x 2.16m)

Family Bathroom

OUTSIDE

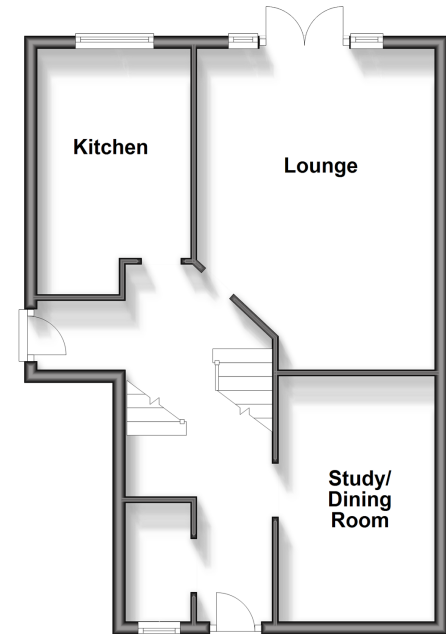
Rear Lobby

Rear Garden

Off Road Parking

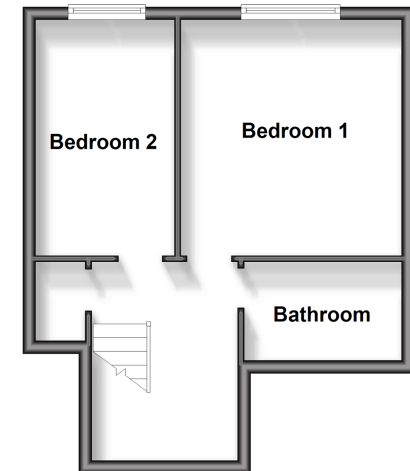
Split Level Ground Floor

Approx. 49.5 sq. metres (532.6 sq. feet)



First Floor

Approx. 33.2 sq. metres (357.6 sq. feet)



Call Walderslade - 01634 865661 ■ wardsofkent.co.uk

- If buying to let, the energy rating will need to be improved to at least 'E' rating before you can let the property
- Legal advice should be taken to verify fixtures/fittings, planning, alterations and/or lease details
- Appliances & services are untested, dimensions are approximate and floor plans are not to scale



12144312/20241026/ML/PP