



**Price**  
**£260,000**

**Freehold**

2x  2x  1x 

**The Yard, Fanconi Road,  
Lordswood, Chatham,  
Kent, ME5**

**OVER 60?**

Secure this property  
for up to **59% less!**

*Wards*  
Helping you move forwards



## Main features

- Lovely modern terrace house
- Fantastic first home
- Short distance to local shops and amenities
- Easy access to the local motorway connections to London and the Kent coast
- Chatham and Maidstone town centres are within easy reach

## Accommodation

### GROUND FLOOR

Entrance Hall

Lounge: 18'0 x 12'3 (5.49m x 3.74m)

Kitchen : 12'2 x 9'0 (3.71m x 2.75m)

### FIRST FLOOR

Landing

Bedroom 1 : 12'3 x 12'0 (3.74m x 3.66m)

En Suite Shower Room : 5'6 x 3'6 (1.68m x 1.07m)

Bedroom 2 : 12'3 x 8'5 (3.74m x 2.57m)

Bathroom : 6'1 x 5'8 (1.86m x 1.73m)

### OUTSIDE

Driveway

Rear Garden

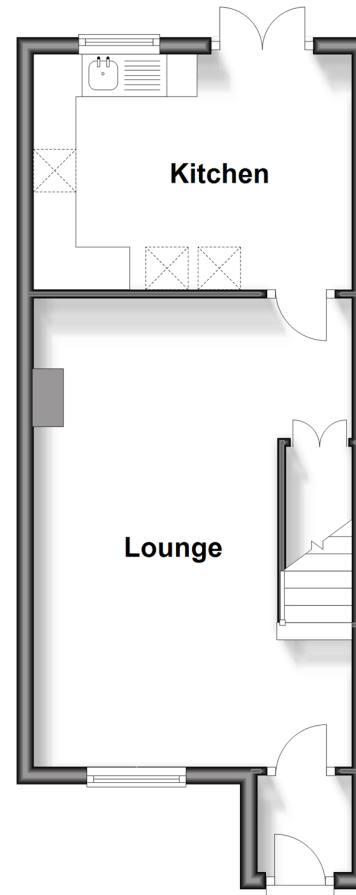
Rear Access Gate

**Call Walderslade - 01634 865661 ■ [wardsofkent.co.uk](http://wardsofkent.co.uk)**

- Legal advice should be taken to verify fixtures/fittings, planning, alterations and/or lease details
- Appliances & services are untested, dimensions are approximate and floor plans are not to scale
- Through a Homewise Home For Life Plan people aged 60+ can secure this property for up to 59% less, by purchasing a Lifetime Lease.

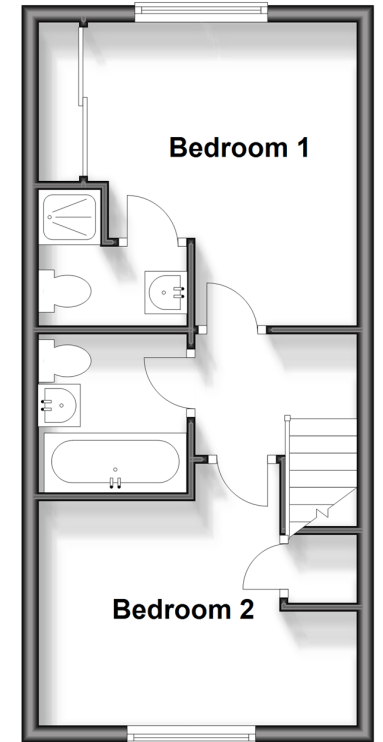
### Ground Floor

Approx. 32.8 sq. metres (353.6 sq. feet)



### First Floor

Approx. 31.0 sq. metres (334.2 sq. feet)



12144286/20241002/ML/PP