



**OVER 60?**

Secure this property  
for up to **59% less!**

**Price**

**£300,000**

**Freehold**

3x  1x  2x 

**King George Road,  
Walderslade, Chatham,  
Kent, ME5**

*Wards*  
Helping you move forwards





## Main features

- Large semi detached house with a driveway to the side
- In need of modernisation
- Potential to extend subject to planning
- Close to shops and schools and a short drive to M2/M20 motorway
- No chain

## Accommodation

### GROUND FLOOR

Entrance Porch  
 Entrance Hall  
 Lounge : 12'6 x 12'2 (3.81m x 3.71m)  
 Dining Area : 10'1 x 9'1 (3.08m x 2.77m)  
 Conservatory  
 Kitchen : 10'1 x 9'5 (3.08m x 2.87m)  
 Room 1  
 Room 2

### FIRST FLOOR

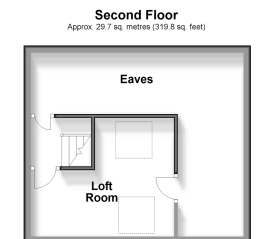
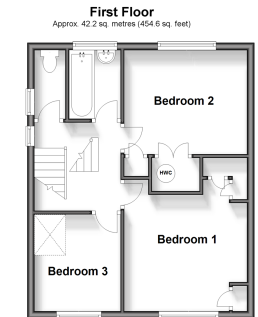
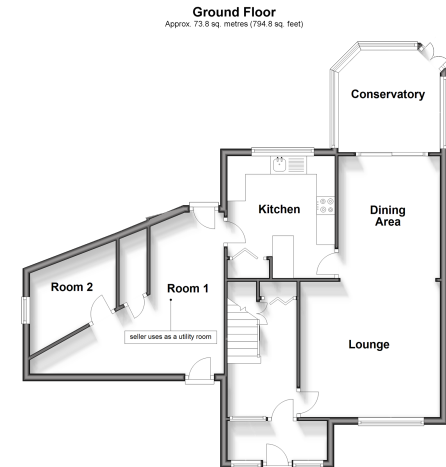
Bedroom 1 : 11'1 x 10'9 (3.38m x 3.28m)  
 Bedroom 2 : 10'9 x 8'6 (3.28m x 2.59m)  
 Separate W.C.  
 Bathroom : 5'4 x 4'8 (1.63m x 1.42m)

### SECOND FLOOR

Loft Room & Eaves

### OUTSIDE

Driveway  
 Front Garden  
 Rear Garden



**Call Walderslade - 01634 865661 ■ [wardsofkent.co.uk](http://wardsofkent.co.uk)**

- Legal advice should be taken to verify fixtures/fittings, planning, alterations and/or lease details
- Appliances & services are untested, dimensions are approximate and floor plans are not to scale
- Through a Homewise Home For Life Plan people aged 60+ can secure this property for up to 59% less, by purchasing a Lifetime Lease.



12144280/20250702/ML/PP