



OVER 60?

Secure this property
for up to **59% less!**

Price

£475,000

Freehold

4x  2x  2x 

**Fowey Close,
Lordswood, Chatham,
Kent, ME5**

Wards
Helping you move forwards



Main features

- Large executive style detached house
- Cul de sac location in a sought after area
- Close proximity to local shops and facilities
- Manageable rear garden
- Short drive to the motorway connections of M2/M20

Accommodation

GROUND FLOOR

- Entrance Porch
- Entrance Hall
- Cloakroom
- Lounge : 15'4 (4.68m) x 13'8 (4.17m) narrowing to 10'7 (3.23m)
- Kitchen/Diner : 26'4 x 11'6 (8.03m x 3.51m)
- Conservatory: 9'8 x 9'2 (2.95m x 2.80m)

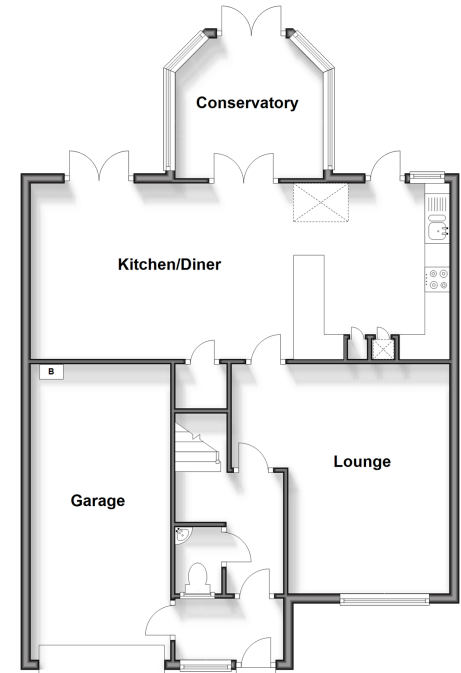
FIRST FLOOR

- Landing
- Bedroom 1: 12'9 x 10'4 (3.89m x 3.15m)
- En Suite Shower Room : 9'8 x 6'2 (2.95m x 1.88m)
- Bedroom 2 : 11'8 x 8'5 (3.56m x 2.57m)
- Bedroom 3 : 10'4 x 8'7 (3.15m x 2.62m)
- Bedroom 4 : 8'8 x 6'2 (2.64m x 1.88m)
- Family Bathroom : 7'4 x 5'6 (2.24m x 1.68m)

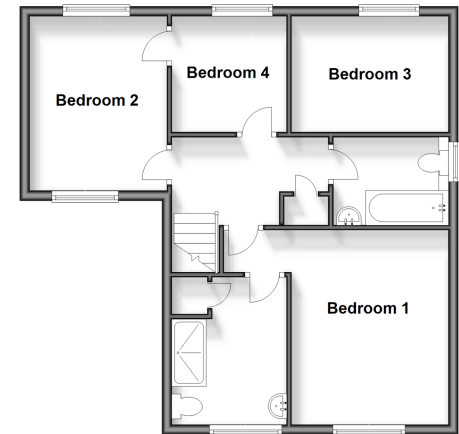
OUTSIDE

- Front Garden
- Driveway
- Garage
- Rear Garden

Ground Floor
Approx. 85.1 sq. metres (915.8 sq. feet)



First Floor
Approx. 56.2 sq. metres (605.4 sq. feet)



Call Walderslade - 01634 865661 ■ wardsof Kent.co.uk

- Legal advice should be taken to verify fixtures/fittings, planning, alterations and/or lease details
- Appliances & services are untested, dimensions are approximate and floor plans are not to scale
- Through a Homewise Home For Life Plan people aged 60+ can secure this property for up to 59% less, by purchasing a Lifetime Lease.



12138018/20241008/ML/PP