



Price
£500,000

Freehold

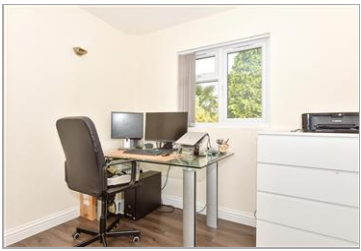
4x  3x  2x 

**Ballens Road,
Lordswood, Chatham,
Kent, ME5**

OVER 60?

Secure this property
for up to **59% less!**

Wards
Helping you move forwards



Main features

- Superb extended semi detached house
- Excellent condition throughout with an en suite
- Conservatory
- Garage & Office
- Close proximity to local amenities, schools and bus routes

Accommodation

GROUND FLOOR

- Entrance Porch
- Entrance Hall
- Lounge : 22'9 (6.94m) narrowing to 9'1 at narrowest point (2.77m) x 11'2 (3.41m)
- Dining Room : 12'7 x 8'6 (3.84m x 2.59m)
- Kitchen : 18'6 x 8'5 (5.64m x 2.57m)
- Shower Room : 5'2 x 4'9 (1.58m x 1.45m)
- Conservatory : 15'8 x 7'9 (4.78m x 2.36m)
- Garage Area : 9'7 x 9'0 (2.92m x 2.75m)
- Office : 9'8 x 9'3 (2.95m x 2.82m)

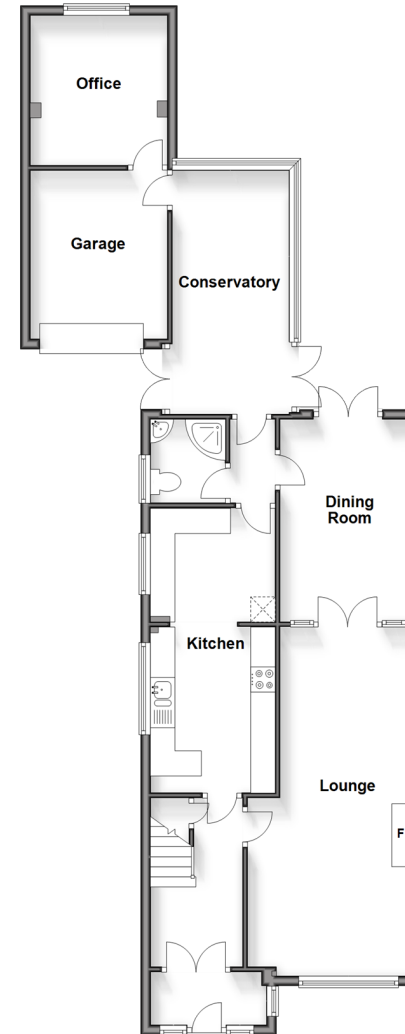
FIRST FLOOR

- Landing
- Bedroom 1 : 13'5 x 8'2 (4.09m x 2.49m)
- En Suite Shower Room : 7'9 x 4'8 (2.36m x 1.42m)
- Bedroom 2 : 12'8 x 8'9 (3.86m x 2.67m)
- Bedroom 3 : 11'8 x 10'5 (3.56m x 3.18m)
- Bedroom 4 : 7'8 x 7'4 (2.34m x 2.24m)
- Bathroom : 6'4 x 5'4 (1.93m x 1.63m)

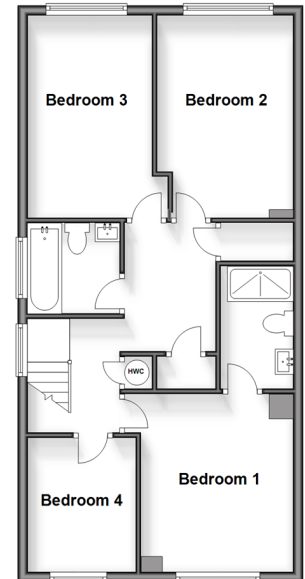
OUTSIDE

- Front Garden
- Driveway
- Rear Garden

Ground Floor
Approx. 92.3 sq. metres (994.0 sq. feet)



First Floor
Approx. 59.9 sq. metres (645.1 sq. feet)



Call Walderslade - 01634 865661 ■ wardsof Kent.co.uk

- Legal advice should be taken to verify fixtures/fittings, planning, alterations and/or lease details
- Appliances & services are untested, dimensions are approximate and floor plans are not to scale
- Through a Homewise Home For Life Plan people aged 60+ can secure this property for up to 59% less, by purchasing a Lifetime Lease.



12133270/20240920/ML/PP