



Price
£410,000

Freehold

5x  2x  3x 

**Chestnut Avenue,
Walderslade, Chatham,
Kent, ME5**

OVER 60?

Secure this property
for up to **59% less!**

Wards
Helping you move forwards



Main features

- Family home which has been extended
- Non estate location
- Very handy downstairs shower room
- Detached garage and driveway at the rear
- No chain

Accommodation

GROUND FLOOR

- Entrance Hall
- Study: 8'9 x 8'4 (2.67m x 2.54m)
- Shower Room: 7'9 x 5'2 (2.36m x 1.58m)
- Kitchen: 11'3 x 8'4 (3.43m x 2.54m)
- Utility Room: 8'0 x 7'4 (2.44m x 2.24m)
- Dining Room: 10'2 x 8'9 (3.10m x 2.67m)
- Lounge: 14'4 x 11'9 (4.37m x 3.58m)

FIRST FLOOR

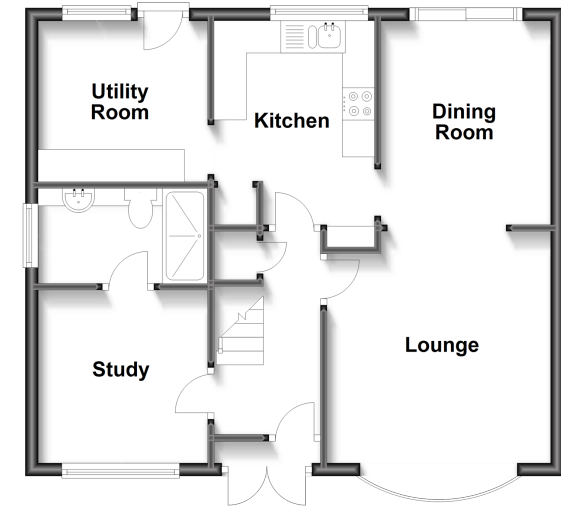
- Landing
- Bedroom 1: 14'7 x 10'2 into bay (4.45m x 3.10m)
- Bedroom 2: 14'8 into recess x 8'1 (4.47m x 2.47m)
- Bedroom 3 : 10'2 x 9'9 (3.10m x 2.97m)
- Bedroom 4 : 8'0 x 7'5 (2.44m x 2.26m)
- Bedroom 5 : 7'8 x 7'1 (2.34m x 2.16m)
- Bathroom

OUTSIDE

- Front Garden
- Rear Garden
- Detached Garage
- Driveway

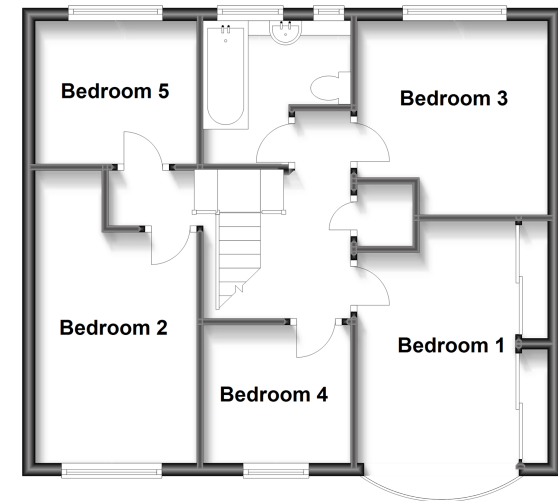
Ground Floor

Approx. 54.8 sq. metres (589.7 sq. feet)



First Floor

Approx. 54.8 sq. metres (589.7 sq. feet)



Call Walderslade - 01634 865661 ■ wardsof Kent.co.uk

- Legal advice should be taken to verify fixtures/fittings, planning, alterations and/or lease details
- Appliances & services are untested, dimensions are approximate and floor plans are not to scale
- Through a Homewise Home For Life Plan people aged 60+ can secure this property for up to 59% less, by purchasing a Lifetime Lease.



12138279/20240919/ML/PP