



Price
£300,000

Freehold

3x  1x  1x 

**Sherwood Avenue,
Walderslade, Chatham,
Kent, ME5**

OVER 60?

Secure this property
for up to **59% less!**

Wards
Helping you move forwards



Main features

- Spacious end of terrace house
- Ideal for those looking to put their own mark on a property
- Backing onto woodland
- Close proximity to local shops and amenities and M20/M2 motorway connections
- No chain

Accommodation

GROUND FLOOR

- Entrance Hall
- Cloakroom
- Storage
- Bar/Study: 7'5 x 6'5 (2.26m x 1.96m)
- Kitchen : 8'4 x 8'2 (2.54m x 2.49m)
- Dining Room : 11'4 x 9'7 (3.46m x 2.92m)
- Lounge : 12'2 x 11'2 (3.71m x 3.41m)

FIRST FLOOR

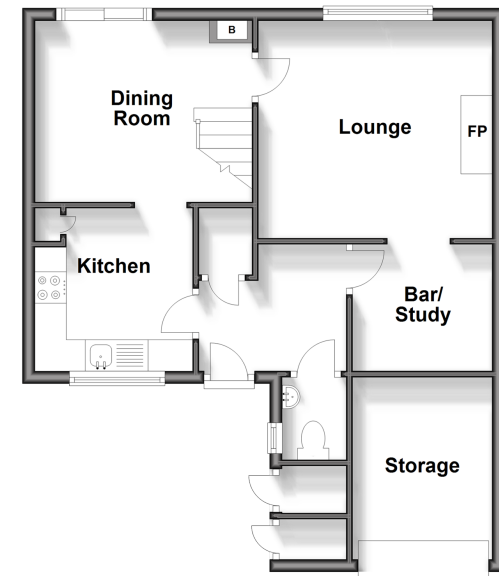
- Landing
- Bedroom 1 : 12'3 x 10'8 (3.74m x 3.25m)
- Bedroom 2 : 12'3 x 8'3 (3.74m x 2.52m)
- Bedroom 3 : 9'3 x 7'4 (2.82m x 2.24m)
- Bathroom : 6'4 x 5'4 (1.93m x 1.63m)

OUTSIDE

- Front Garden
- Driveway
- Rear Garden

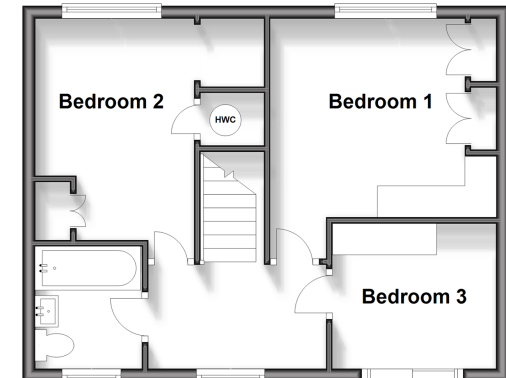
Ground Floor

Approx. 50.7 sq. metres (545.9 sq. feet)



First Floor

Approx. 41.0 sq. metres (441.7 sq. feet)



Call Walderslade - 01634 865661 ■ wardsof Kent.co.uk

- Legal advice should be taken to verify fixtures/fittings, planning, alterations and/or lease details
- Appliances & services are untested, dimensions are approximate and floor plans are not to scale
- Through a Homewise Home For Life Plan people aged 60+ can secure this property for up to 59% less, by purchasing a Lifetime Lease.



12144258/20240909/ML/PP