



Guide Price
£425,000

Freehold

4x  1x  2x 

**Forestdale Road,
Chatham, Kent, ME5**

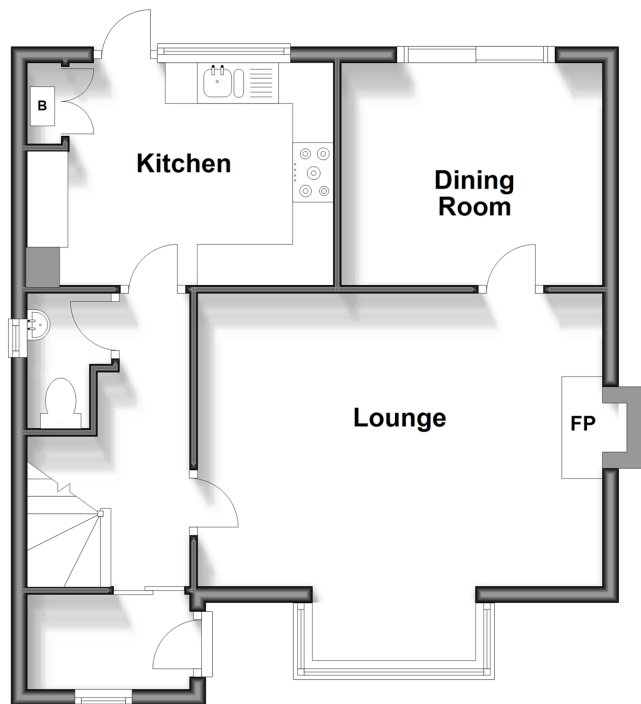
OVER 60?

Secure this property
for up to **59% less!**

Wards
Helping you move forwards

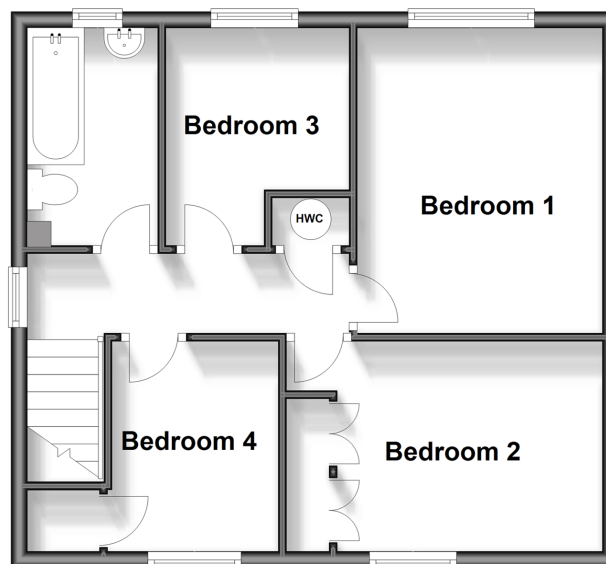
Ground Floor

Approx. 48.8 sq. metres (525.7 sq. feet)



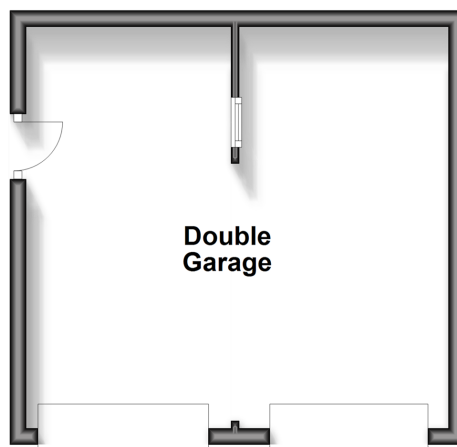
First Floor

Approx. 45.4 sq. metres (488.9 sq. feet)



Outbuilding

Approx. 25.7 sq. metres (276.3 sq. feet)



Accommodation

GROUND FLOOR

Entrance Porch

Entrance Hall

Lounge : 16'8 x 11'0 (5.08m x 3.36m)

Downstairs Cloakroom

Dining Room : 10'6 x 9'0 (3.20m x 2.75m)

Kitchen : 12'2 x 9'0 (3.71m x 2.75m)

FIRST FLOOR

Landing

Bedroom 1 : 12'4 x 9'11 (3.76m x 3.02m)

Bedroom 2 : 12'10 x 8'5 (3.91m x 2.57m)

Bedroom 3 : 9'0 x 7'5 (2.75m x 2.26m)

Bedroom 4 : 8'8 x 6'8 (2.64m x 2.03m)

Family Bathroom

OUTBUILDING

Double Garage

OUTSIDE

Driveway

Front Garden

Rear Garden



Main features

- Stunning family home in the popular Walderslade Woods
- Great condition throughout
- Make the most of the outside space with large front garden and easy to maintain rear garden
- Double garage
- Close to the M2/M20 motorway connections



Nearest Schools

Primary Schools: Tunbury Primary 1.2 miles, Horsted Junior School 1.6 miles, Ridge Meadow Primary 1.7 miles

Secondary Schools: Walderslade Girls' School 2.7 miles, Greenacre School 2.8 miles, Bradfields School 2.9 miles



Transport Information

Train Stations: Rochester 3.9 miles, Gillingham 4.0 miles, Chatham 5.0 miles



Address

Forestdale Road, Chatham, Kent, ME5



Directions

For directions to this property please contact us.



Call Walderslade Branch 01634 865661 ■ wardsofkent.co.uk



- Legal advice should be taken to verify fixtures/fittings, planning, alterations and/or lease details
- Appliances & services are untested, dimensions are approximate and floor plans are not to scale
- Through a Homewise Home For Life Plan people aged 60+ can secure this property for up to 59% less, by purchasing a Lifetime Lease.



12144215/20250319/ML/BJ