



Price
£260,000

Freehold

3x  1x  2x 

**Bolner Close,
Walderslade, Chatham,
Kent, ME5**

OVER 60?

Secure this property
for up to **59% less!**

Wards
Helping you move forwards



Main features

- In need of modernisation
- Ideal investment property close to Walderslade centre
- Bus routes to Chatham and Maidstone within walking distance
- Easy access to M2/M20 motorway connections
- No chain

Accommodation

GROUND FLOOR

Entrance Hall

Lounge : 11'9 x 11'9 (3.58m x 3.58m)

Kitchen/Diner : 18'2 x 10'4 (5.54m x 3.15m)

FIRST FLOOR

Landing

Bedroom 1 : 11'8 x 10'3 (3.56m x 3.13m)

Bedroom 2 : 11'4 x 10'5 (3.46m x 3.18m)

Bedroom 3 : 8'8 x 7'7 (2.64m x 2.31m)

Bathroom

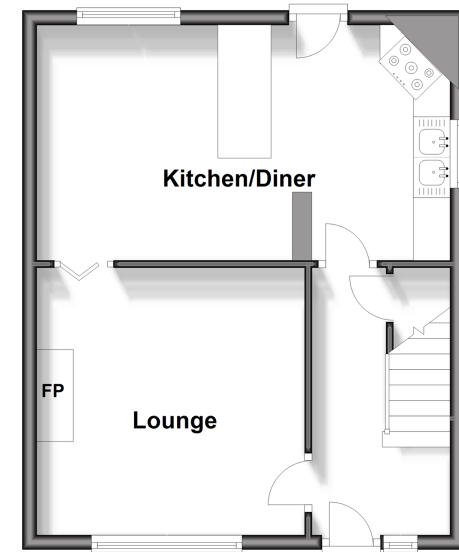
OUTSIDE

Front Garden

Rear Garden

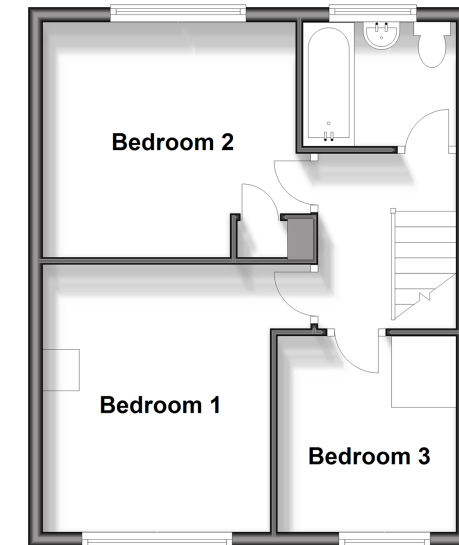
Ground Floor

Approx. 39.2 sq. metres (422.2 sq. feet)



First Floor

Approx. 39.2 sq. metres (422.2 sq. feet)



Call Walderslade - 01634 865661 ■ wardsof Kent.co.uk

- Legal advice should be taken to verify fixtures/fittings, planning, alterations and/or lease details
- Appliances & services are untested, dimensions are approximate and floor plans are not to scale
- Through a Homewise Home For Life Plan people aged 60+ can secure this property for up to 59% less, by purchasing a Lifetime Lease.



12144216/20240729/ML/ABB