



Price

£500,000

Freehold

4x  1x  2x 

Barling Close, Bluebell
Hill Village, Chatham,
Kent, ME5

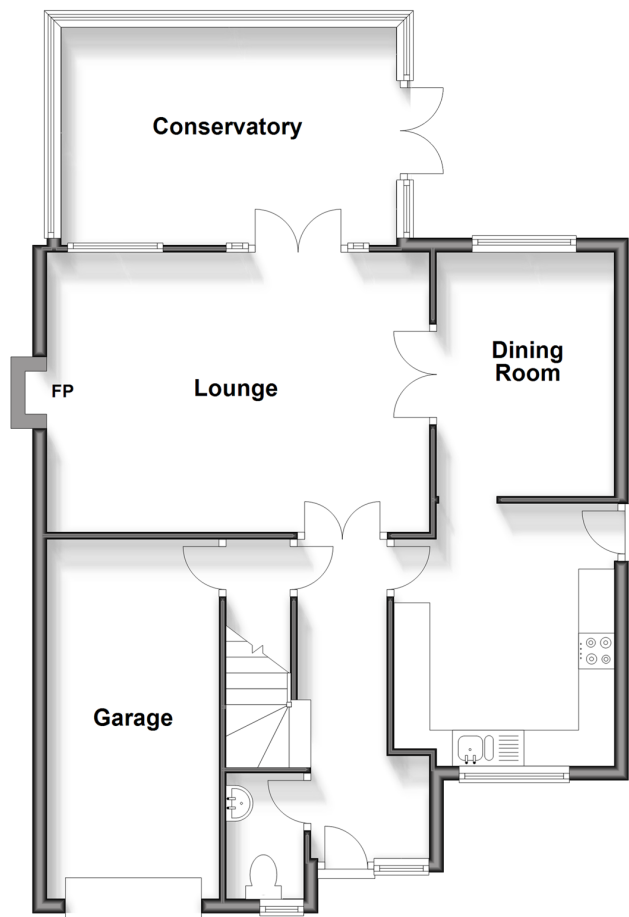
OVER 60?

Secure this property
for up to **59% less!**

Wards
Helping you move forwards

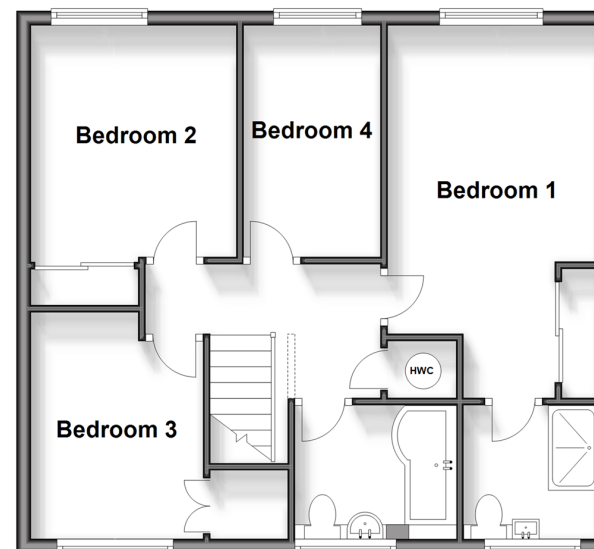
Ground Floor

Approx. 80.6 sq. metres (867.7 sq. feet)



First Floor

Approx. 56.9 sq. metres (612.7 sq. feet)



Accommodation

GROUND FLOOR

Entrance Hall
Cloakroom : 5'7 x 3'5 (1.70m x 1.04m)
Lounge : 17'6 x 12'7 (5.34m x 3.84m)
Dining Room : 11'1 x 8'1 (3.38m x 2.47m)
Kitchen : 12'0 x 10'0 (3.66m x 3.05m)
Conservatory : 15'5 x 10'0 (4.70m x 3.05m)

Bedroom 2: 10'7 x 9'4 (3.23m x 2.85m)
Bedroom 3: 10'4 x 8'0 (3.15m x 2.44m)
Bedroom 4 : 10'7 x 6'4 (3.23m x 1.93m)
Family Bathroom : 7'6 x 6'2 (2.29m x 1.88m)

FIRST FLOOR

Landing
Bedroom 1 : 17'1 x 9'8 (5.21m x 2.95m)
En Suite Shower : 6'2 x 6'1 (1.88m x 1.86m)

OUTSIDE

Front Garden
Garage and Driveway
Rear Garden



Main features

- Impressive family home in a sought after area
- Very handy downstairs toilet
- En suite to main bedroom
- Sizeable conservatory adding to the living space nicely
- Close to the motorway links to London and the Kent Coast



Nearest Schools

Primary Schools: Tunbury Primary 0.7 miles, Burham C of E Primary 0.9 miles, Horsted Junior School 1.2 miles

Secondary Schools: Greenacre School 1.5 miles, Walderslade Girls' School 1.6 miles, Bradfields School 1.8



Transport Information

Train Stations: Snodland 2.4 miles, New Hythe 2.4 miles, Aylesford 2.7 miles



Address

Barling Close, Bluebell Hill Village, Chatham, Kent, ME5



Directions

For directions to this property please contact us.



Wards
Helping you move forwards

Call Walderslade Branch 01634 865661 ■ wardsofkent.co.uk



- Legal advice should be taken to verify fixtures/fittings, planning, alterations and/or lease details
- Appliances & services are untested, dimensions are approximate and floor plans are not to scale
- Through a Homewise Home For Life Plan people aged 60+ can secure this property for up to 59% less, by purchasing a Lifetime Lease.

EPC RATING	CURRENT:	POTENTIAL:

12142210/20240430/ML/KG