



**Price**  
**£240,000**

**Leasehold**

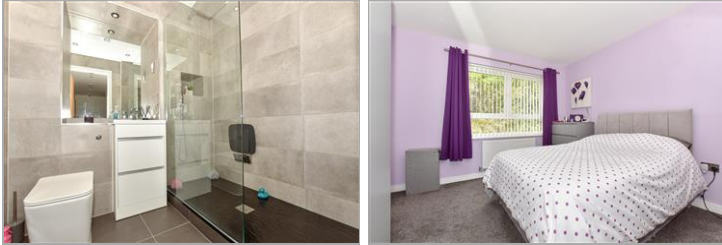
2x  1x  1x 

**Helms Way, Chatham,  
Kent, ME5**

**OVER 60?**

Secure this property  
for up to **59% less!**

*Wards*  
Helping you move forwards



## Main features

- Immaculate and spacious property in a convenient location
- Open plan living arrangements
- Own rear garden
- Tucked away in the cul-de-sac which is a private road
- 2 allocated parking spaces

## Accommodation

### FIRST FLOOR

#### Landing

Lounge/Kitchen : 23'6 x 16'8 (7.17m x 5.08m)

Bedroom 1: 11'7 x 9'3 (3.53m x 2.82m)

Bedroom 2: 11'8 x 11'3 (3.56m x 3.43m)

Shower Room: 6'7 x 5'4 (2.01m x 1.63m)

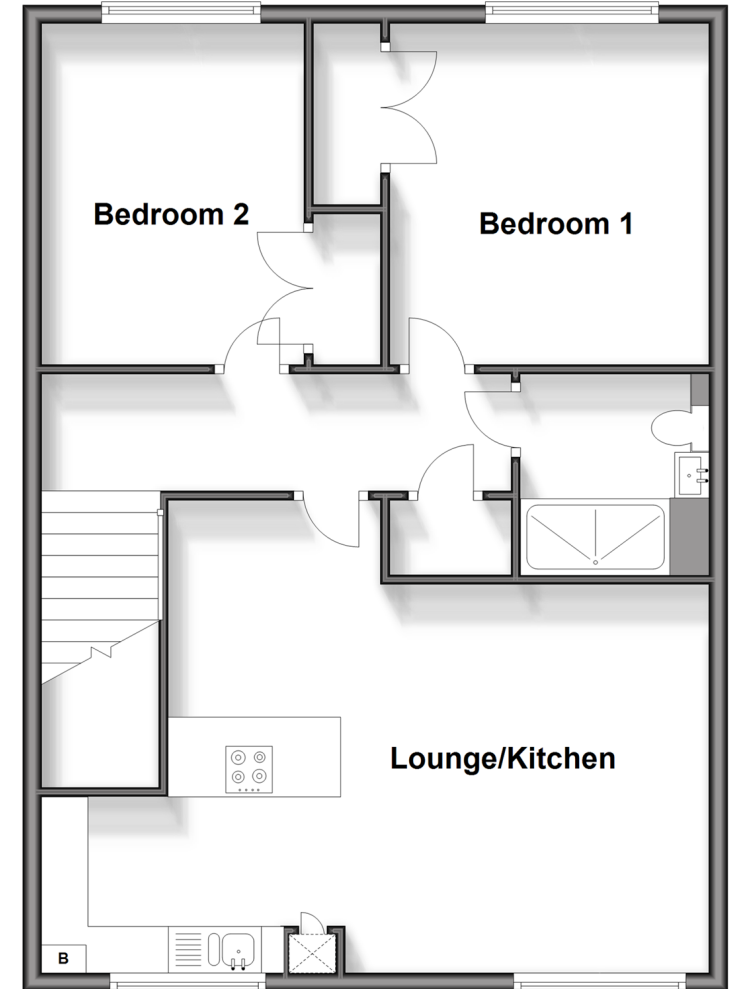
### OUTSIDE

#### Rear Garden

2 Allocated Parking Spaces

## First Floor

Approx. 73.2 sq. metres (788.0 sq. feet)



Call Walderslade - 01634 865661 ■ [wardsof Kent.co.uk](http://wardsof Kent.co.uk)

- Legal advice should be taken to verify fixtures/fittings, planning, alterations and/or lease details
- Appliances & services are untested, dimensions are approximate and floor plans are not to scale
- Through a Homewise Home For Life Plan people aged 60+ can secure this property for up to 59% less, by purchasing a Lifetime Lease.



12144018/20240430/KG/KG