



Guide Price
£220,000

Freehold

2x  1x  1x 

**Chaffinch Close,
Walderslade, Chatham,
Kent, ME5**

OVER 60?

Secure this property
for up to **59% less!**

Wards
Helping you move forwards



Main features

- An excellent first time buy or buy to let investment
- Recently fitted French doors leading to a rear garden
- Popular commuter cottage style
- Close to local amenities
- Good connections to M2/M20 motorways

Accommodation

GROUND FLOOR

Entrance Porch

Kitchen: 9'2 x 5'0 (2.80m x 1.53m)

Lounge/Diner : 12'5 x 11'6 (3.79m x 3.51m)

FIRST FLOOR

Bedroom 2 : 8'2 x 7'3 (2.49m x 2.21m)

Bedroom 1 : 11'6 x 8'0 (3.51m x 2.44m)

Shower Room : 5'9 x 5'4 (1.75m x 1.63m)

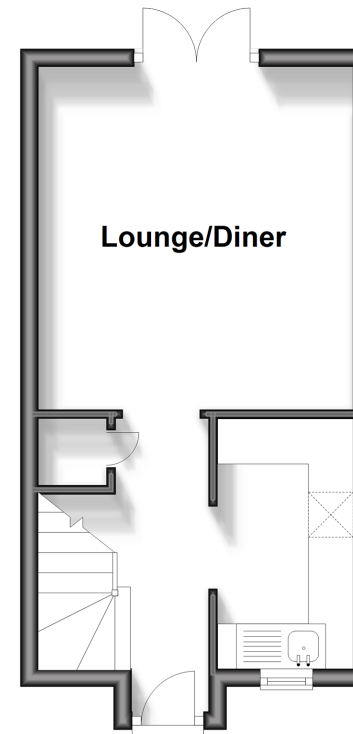
OUTSIDE

Front Garden

Rear Garden

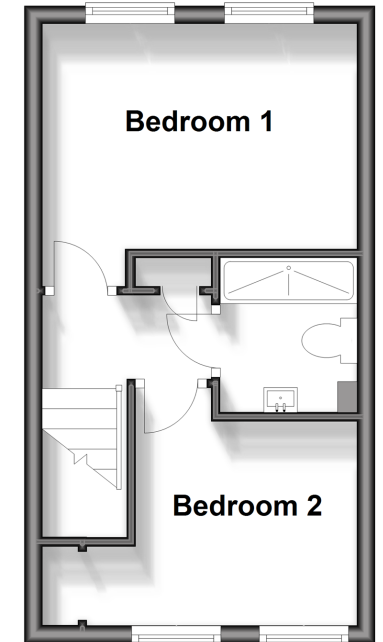
Ground Floor

Approx. 24.0 sq. metres (258.6 sq. feet)



First Floor

Approx. 23.6 sq. metres (254.1 sq. feet)



Call Walderslade - 01634 865661 ■ wardsof Kent.co.uk

- Legal advice should be taken to verify fixtures/fittings, planning, alterations and/or lease details
- Appliances & services are untested, dimensions are approximate and floor plans are not to scale
- Through a Homewise Home For Life Plan people aged 60+ can secure this property for up to 59% less, by purchasing a Lifetime Lease.



12144124/20240708/ABB/KG