



OVER 60?

Secure this property
for up to **59% less!**

Guide Price
£300,000

Freehold

3x  1x  1x 

**Bilsington Close,
Walderslade, Chatham,
Kent, ME5**

Wards
Helping you move forwards



Main features

- A modern property in a quiet cul-de-sac
- Well presented throughout
- Sizeable conservatory adding to the living space
- Driveway for one car
- No chain

Accommodation

GROUND FLOOR

Entrance Hall

Lounge : 13'4 x 12'3 (4.07m x 3.74m)

Dining Area : 9'3 x 8'2 (2.82m x 2.49m)

Kitchen : 9'0 x 7'1 (2.75m x 2.16m)

Garden Room: 16'1 x 12'4 (4.91m x 3.76m)

FIRST FLOOR

Landing

Bedroom 1 : 11'4 x 8'4 (3.46m x 2.54m)

Bedroom 2 : 9'4 x 8'8 (2.85m x 2.64m)

Bedroom 3 : 8'3 x 6'9 (2.52m x 2.06m)

Bathroom : 6'5 x 5'8 (1.96m x 1.73m)

OUTSIDE

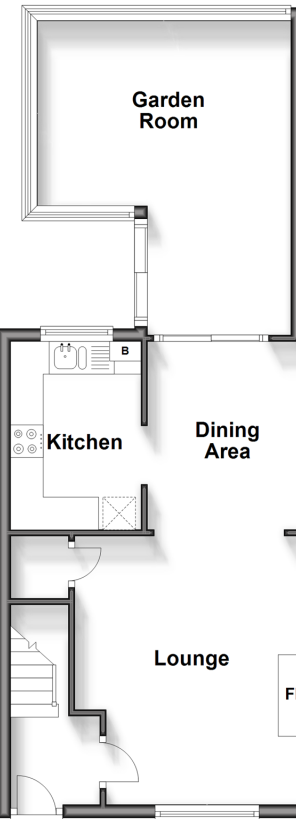
Driveway for one car

Front Side Access

Rear Garden

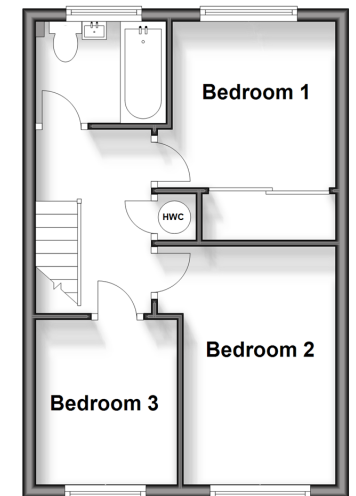
Ground Floor

Approx. 48.4 sq. metres (520.8 sq. feet)



First Floor

Approx. 32.7 sq. metres (352.4 sq. feet)



Call Walderslade - 01634 865661 ■ wardsof Kent.co.uk

- Legal advice should be taken to verify fixtures/fittings, planning, alterations and/or lease details
- Appliances & services are untested, dimensions are approximate and floor plans are not to scale
- Through a Homewise Home For Life Plan people aged 60+ can secure this property for up to 59% less, by purchasing a Lifetime Lease.



12144094/20240313/ML/KG