



Price
£375,000

Freehold

3x  2x  1x 

**Walderslade Road,
Walderslade, Chatham,
Kent, ME5**

OVER 60?

Secure this property
for up to **59% less!**

Wards
Helping you move forwards



Main features

- A sizeable property tucked away with flexible and versatile layout
- En suite to the main bedroom
- Flat rear garden
- Conveniently located close to amenities and bus routes
- Short drive to M2/M20 motorway

Accommodation

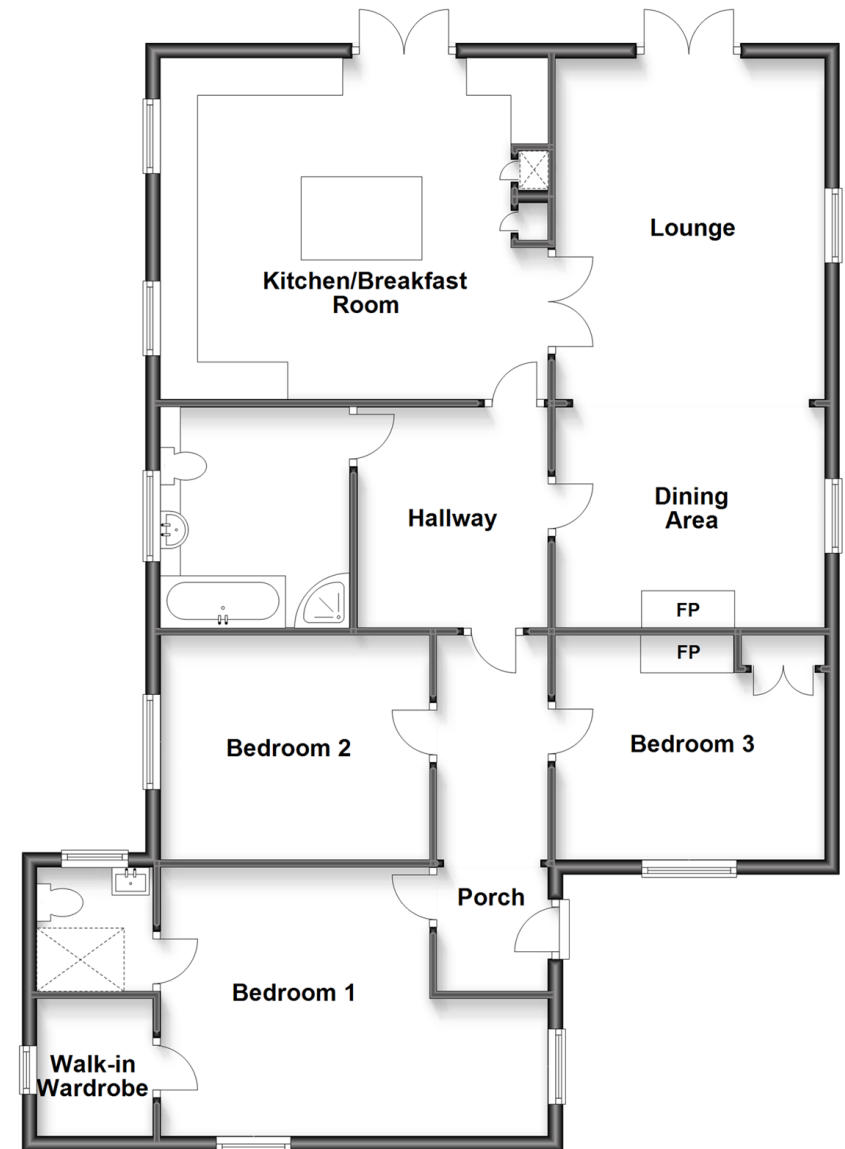
GROUND FLOOR

- Entrance Porch
- Entrance Hall
- Bedroom 1 : 17'1 x 12'3 (5.21m x 3.74m)
- Walk in Wardrobe : 6'3 x 5'2 (1.91m x 1.58m)
- En Suite Wet Room : 5'5 x 5'1 (1.65m x 1.55m)
- Bedroom 2: 12'3 x 9'8 (3.74m x 2.95m)
- Bedroom 3: 11'9 x 9'8 (3.58m x 2.95m)
- Bathroom : 9'8 x 8'5 (2.95m x 2.57m)
- Lounge/Dining Area : 25'6 x 12'2 (7.78m x 3.71m)
- Kitchen/Breakfast Room : 16'5 x 15'5 (5.01m x 4.70m)

OUTSIDE

- Rear Garden
- Front Driveway

Ground Floor
Approx. 121.1 sq. metres (1303.8 sq. feet)



Call Walderslade - 01634 865661 ■ wardsof Kent.co.uk

- Legal advice should be taken to verify fixtures/fittings, planning, alterations and/or lease details
- Appliances & services are untested, dimensions are approximate and floor plans are not to scale
- Through a Homewise Home For Life Plan people aged 60+ can secure this property for up to 59% less, by purchasing a Lifetime Lease.



12135500/20240514/BJ/KG