



Price
£375,000

Freehold

4x  3x  2x 

**Winchester Avenue,
Walderslade, Chatham,
Kent, ME5**

OVER 60?

Secure this property
for up to **59% less!**

Wards
Helping you move forwards



Main features

- Spacious family home in a quiet cul-de-sac
- Well presented home throughout
- Garage converted into a 4th bedroom with en-suite
- Impressive modern kitchen
- No chain

Accommodation

GROUND FLOOR

- Entrance Porch
- Bedroom 4: 11'9 x 7'6 (3.58m x 2.29m)
- En suite Shower : 7'5 x 3'9 (2.26m x 1.14m)
- Lounge : 15'8 x 15'5 (4.78m x 4.70m)
- Kitchen : 15'8 x 11'3 (4.78m x 3.43m)

FIRST FLOOR

- Landing
- Bedroom 1 : 13'9 x 9'0 (4.19m x 2.75m)
- Bedroom 2 : 10'7 x 9'0 (3.23m x 2.75m)
- Bedroom 3 : 10'3 x 6'4 (3.13m x 1.93m)
- Family Bathroom : 7'6 x 5'3 (2.29m x 1.60m)

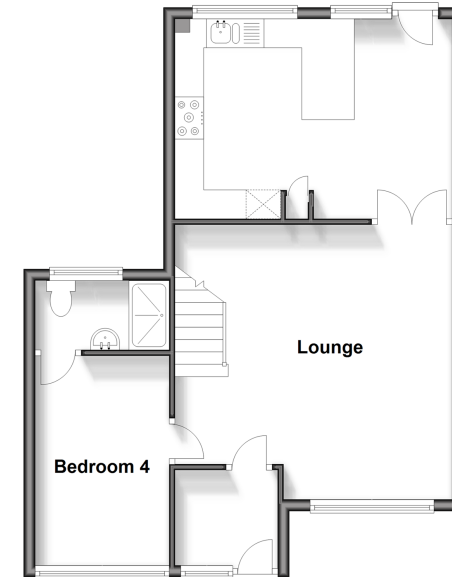
OUTSIDE

- Front Garden
- Rear Garden
- Driveway for 2 Cars

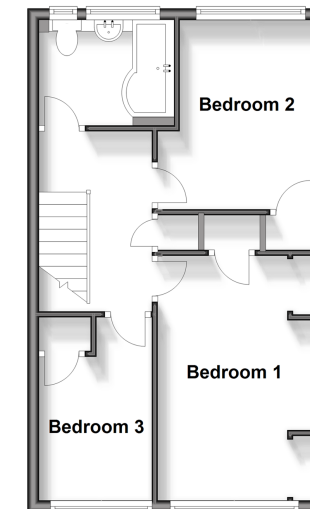
Call Walderslade - 01634 865661 ■ wardsof Kent.co.uk

- Legal advice should be taken to verify fixtures/fittings, planning, alterations and/or lease details
- Appliances & services are untested, dimensions are approximate and floor plans are not to scale
- Through a Homewise Home For Life Plan people aged 60+ can secure this property for up to 59% less, by purchasing a Lifetime Lease.

Ground Floor
Approx. 54.1 sq. metres (582.6 sq. feet)



First Floor
Approx. 40.4 sq. metres (435.2 sq. feet)



12143925/20231120/ML/KG