



OVER 60?

Secure this property
for up to **59% less!**

Price

£320,000

Leasehold

2x  2x  1x 

**Atherstone Heights,
Salomons Grove,
Southborough,
Tunbridge Wells, Kent,**

Wards
Helping you move forwards



Main features

- Well presented first floor apartment in popular development
- Modern open plan living
- Communal gardens and allocated parking
- Private balcony to enjoy in the warmer months
- Walking distance to local amenities

Accommodation

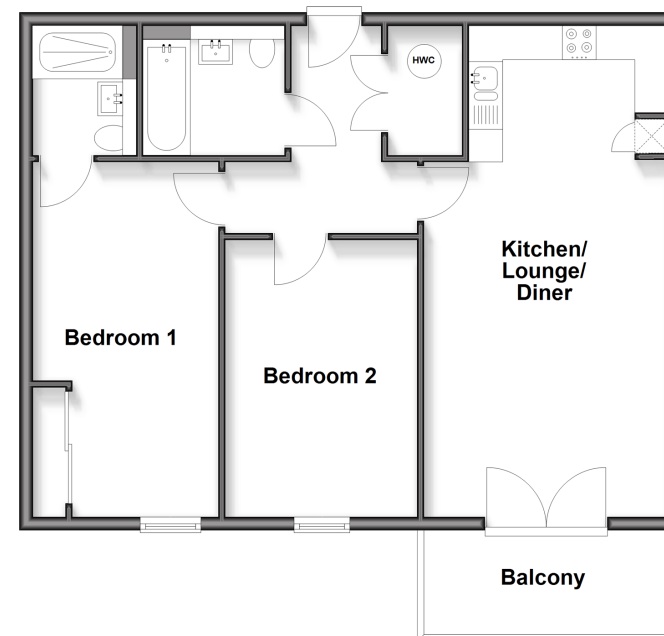
FIRST FLOOR

Hallway
 Kitchen/Lounge/Diner: 22'6 x 13'1 (6.86m x 3.99m)
 Balcony
 Bedroom 1: 15'9 x 9'11 (4.80m x 3.02m)
 En Suite Shower Room
 Bedroom 2: 11'10 x 10'10 (3.61m x 3.30m)
 Bathroom

OUTSIDE

Allocated Parking
 Communal Gardens

First Floor
 Approx. 68.2 sq. metres (734.3 sq. feet)



Call Tunbridge Wells - 01892 542767 ■ wardsofkent.co.uk

■ Legal advice should be taken to verify fixtures/fittings, planning, alterations and/or lease details
 ■ Through a Homewise Home For Life Plan people aged 60+ can secure this property for up to 59% less, by purchasing a Lifetime Lease.

■ Appliances & services are untested, dimensions are approximate and floor plans are not to scale