



Price
£320,000

Leasehold

2x  2x  1x 

**Atherstone Heights,
Salomons Grove,
Southborough,
Tunbridge Wells, Kent,**

OVER 60?

Secure this property
for up to **59% less!**

Wards
Helping you move forwards



Main features

- **Stunning ground floor apartment in sought after development**
- **Bright open plan lounge/kitchen/diner with access to private terrace**
- **Allocated parking and communal gardens**
- **Walking distance to local amenities**
- **Perfect for first time buyers or those looking to downsize**

Accommodation

GROUND FLOOR

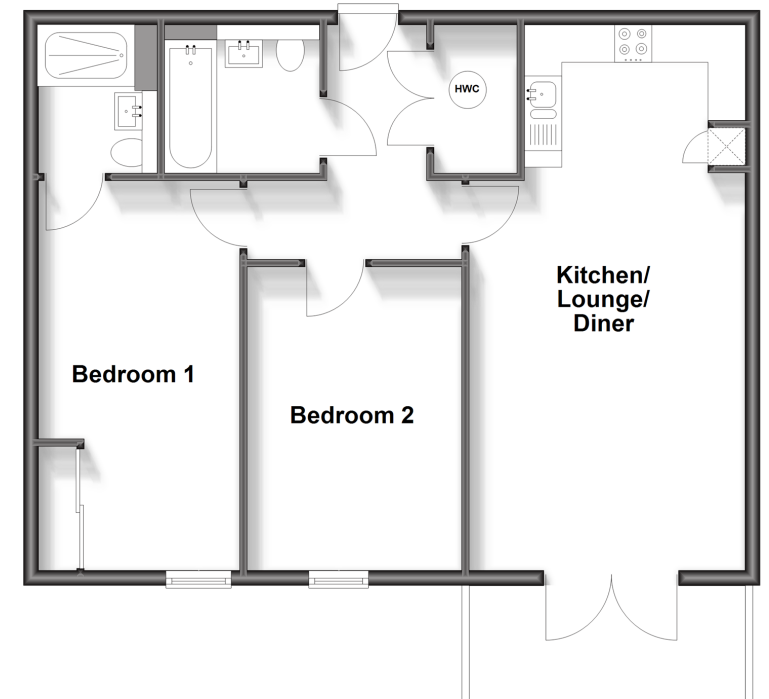
Hallway
 Lounge/Kitchen/Diner: 22'6 x 13'1 (6.86m x 3.99m)
 Bedroom 1: 15'9 x 9'11 (4.80m x 3.02m)
 En Suite Shower Room
 Bedroom 2: 11'10 x 10'10 (3.61m x 3.30m)
 Bathroom

OUTSIDE

Communal Gardens
 Allocated Parking

Ground Floor

Approx. 69.2 sq. metres (744.9 sq. feet)



Call Tunbridge Wells - 01892 542767 ■ wardsofkent.co.uk

■ Legal advice should be taken to verify fixtures/fittings, planning, alterations and/or lease details
 ■ Through a Homewise Home For Life Plan people aged 60+ can secure this property for up to 59% less, by purchasing a Lifetime Lease.

■ Appliances & services are untested, dimensions are approximate and floor plans are not to scale