



Guide Price
£375,000

Freehold

2x  1x  2x 

**St. Mary's Road,
Tonbridge, Kent, TN9**

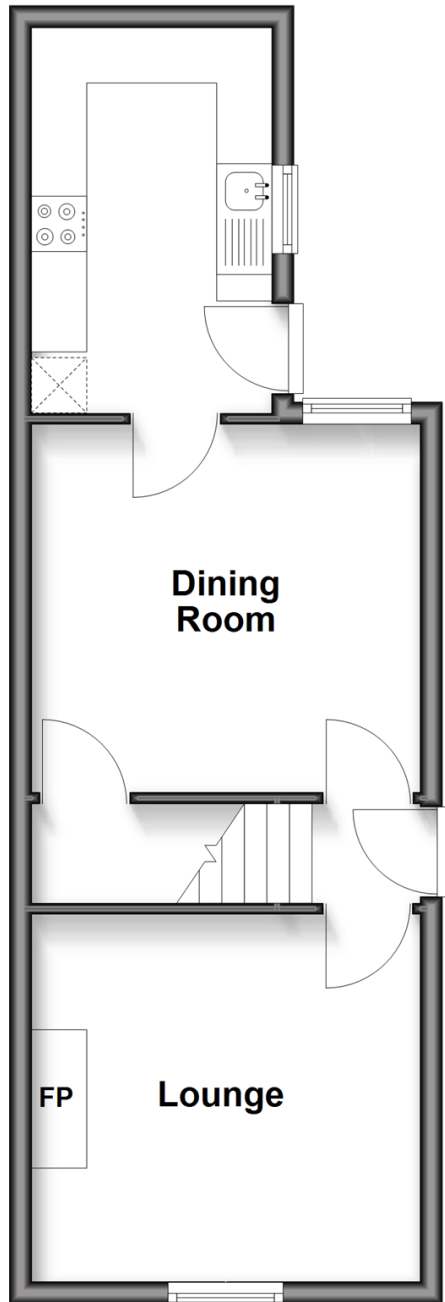
OVER 60?

Secure this property
for up to **59% less!**

Wards
Helping you move forwards

Ground Floor

Approx. 35.1 sq. metres (377.5 sq. feet)



First Floor

Approx. 35.1 sq. metres (377.5 sq. feet)



Accommodation

GROUND FLOOR

Hallway

Lounge: 11'5 x 10'9 (3.48m x 3.28m)

Dining Room: 11'6 x 10'9 (3.51m x 3.28m)

Kitchen: 11'4 x 6'10 (3.46m x 2.08m)

FIRST FLOOR

Landing

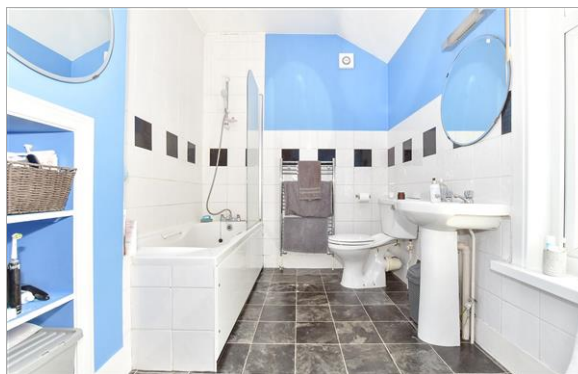
Bedroom 1: 11'5 x 10'8 (3.48m x 3.25m)

Bedroom 2: 10'10 x 8'5 (3.30m x 2.57m)

Bathroom

OUTSIDE

Front & Rear Gardens



Main features

- Charming Victorian semi detached house in sought after South Tonbridge
- Ideally located for the station, shops and renowned schools
- Excellent access to A21 and motorway networks
- Delightful rear garden that enjoys the sun
- Many improvements made and move in ready



Nearest Schools

Primary Schools: Sussex Road Community Primary 0.8 miles, St Stephen's (Tonbridge) Primary 1.2 miles, Slade Primary and Attached Unit for Children with Hearing Impairment 1.3 miles



Transport Information

Train Stations: Tonbridge 0.7 miles, High Brooms 3.4 miles, Tunbridge Wells 3.7 miles



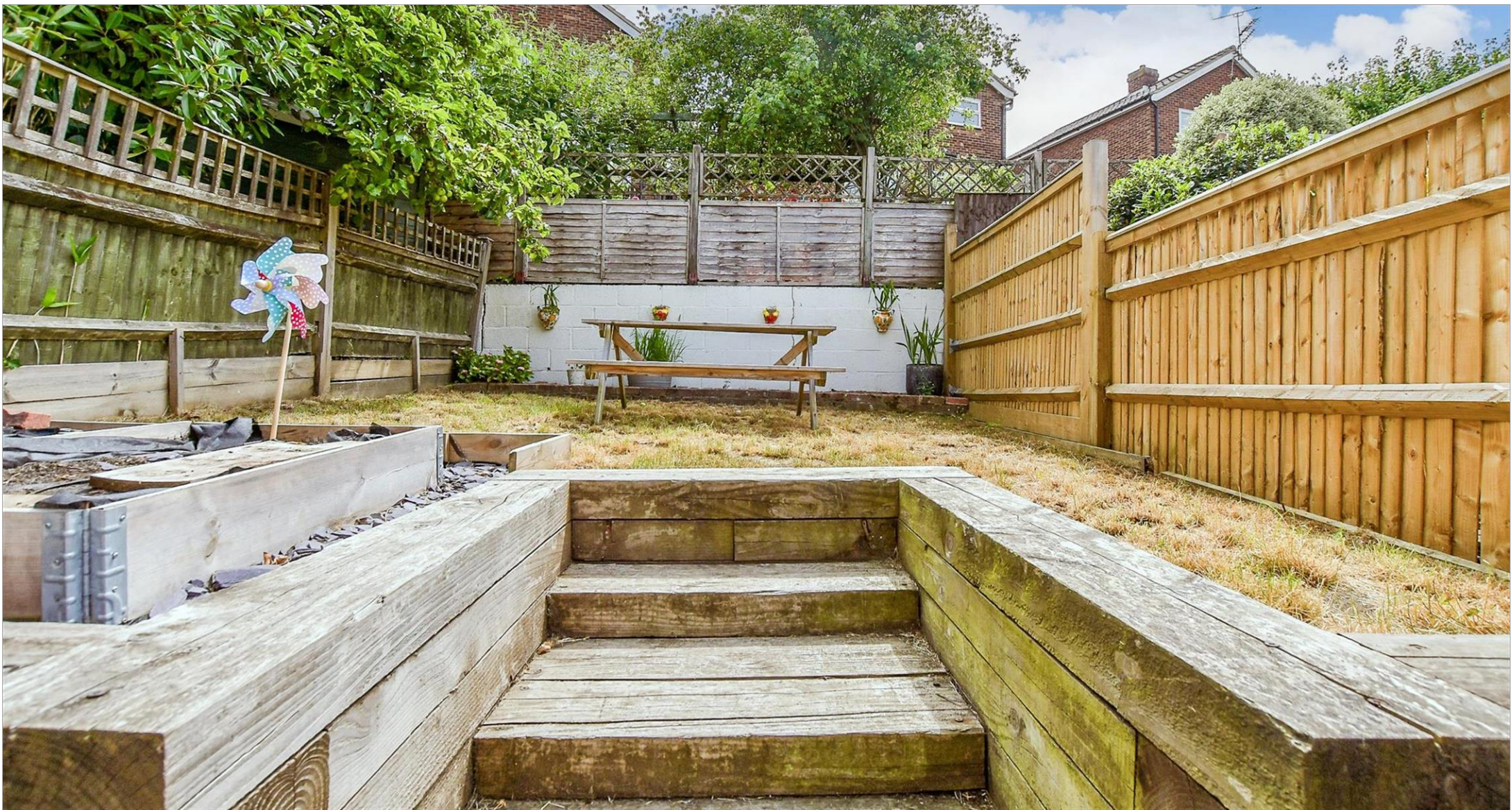
Address

St. Mary's Road, Tonbridge, Kent, TN9



Directions

For directions to this property please contact us.



Call Tonbridge Branch 01732 770755 ■ wardsofkent.co.uk



- Legal advice should be taken to verify fixtures/fittings, planning, alterations and/or lease details
- Appliances & services are untested, dimensions are approximate and floor plans are not to scale
- Through a Homewise Home For Life Plan people aged 60+ can secure this property for up to 50% less, by purchasing a Lifetime Lease.



14134344/20250918/NR/NR