



OVER 60?

Secure this property
for up to **59% less!**

Price

£500,000

Freehold

4x  2x  2x 

**Beagles Wood Road,
Pembury, Tunbridge
Wells, Kent, TN2**

Wards
Helping you move forwards



Main features

- Beautifully presented modern family home
- Popular village location with quick access to A21 / M25
- Substantial private rear and side garden
- Quite cul-de-sac with off-street parking available
- Thoughtfully extended with plenty of living space
- Walking distance to primary school, GP practice and High Street

Accommodation

GROUND FLOOR

Hallway

Lounge: 11'10 x 11'6 (3.61m x 3.51m)

Kitchen/Diner: 26'11 x 9'6 (8.21m x 2.90m)

Dining Area: 11'6 x 9'10 (3.51m x 3.00m)

Bedroom 4: 8'10 x 8'6 (2.69m x 2.59m)

En Suite Shower Room

FIRST FLOOR

Landing

Bedroom 1: 13'7 x 9'6 (4.14m x 2.90m)

Bedroom 2: 9'10 x 9'2 (3.00m x 2.80m)

Bedroom 3: 8'6 x 6'11 (2.59m x 2.11m)

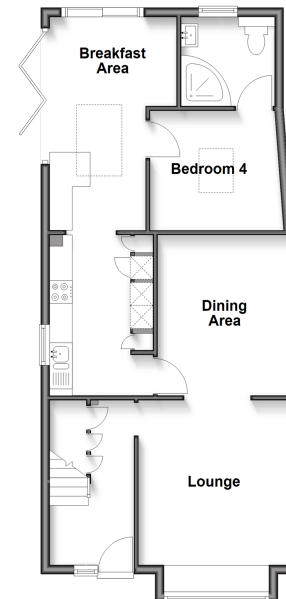
Bathroom

OUTSIDE

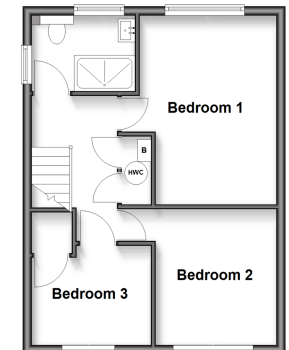
Off Road Parking

Rear & Side Gardens

Ground Floor
Approx. 63.7 sq. metres (686.1 sq. feet)



First Floor
Approx. 38.8 sq. metres (417.2 sq. feet)



Call Tonbridge - 01732 770755 ■ wardsofkent.co.uk

■ Legal advice should be taken to verify fixtures/fittings, planning, alterations and/or lease details
■ Through a Homewise Home For Life Plan people aged 60+ can secure this property for up to 59% less, by purchasing a Lifetime Lease.

■ Appliances & services are untested, dimensions are approximate and floor plans are not to scale



14134133/20250224/GA/GA