



**Price**  
**£525,000**

**Freehold**

3x  1x  1x 

**Riding Park,  
Hildenborough,  
Tonbridge, Kent, TN11**

*Wards*  
Helping you move forwards





## Main features

- Beautiful modern family house
- Potential to add further subject to consents
- Substantial rear garden with view overlooking woodlands and fields
- Situated within the quiet cul-de-sac
- Driveway to front of the property

## Accommodation

### GROUND FLOOR

Porch  
Hallway  
Lounge: 17'10 x 11'11 (5.44m x 3.63m)  
Kitchen/Diner: 17'10 x 13'0 (5.44m x 3.97m)

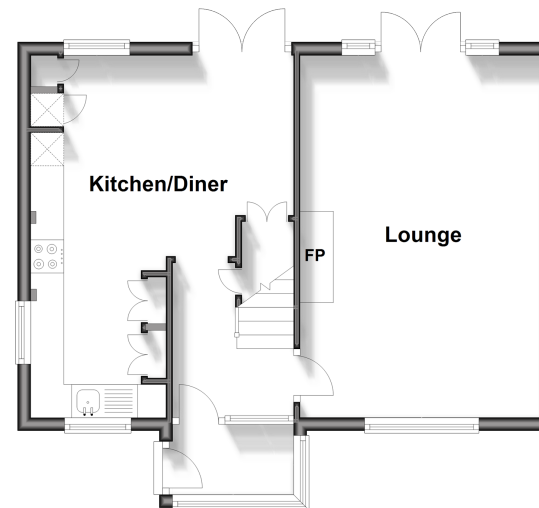
### FIRST FLOOR

Landing  
Bedroom 1: 11'10 x 9'10 (3.61m x 3.00m)  
Bedroom 2: 12'0 x 9'10 (3.66m x 3.00m)  
Bedroom 3: 8'10 x 7'7 (2.69m x 2.31m)  
Shower Room

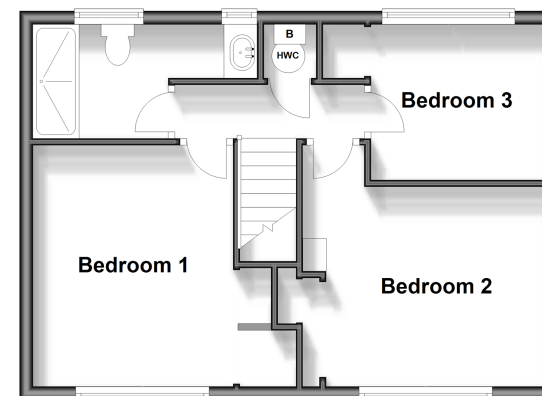
### OUTSIDE

Off Road Parking  
Car Port  
Front and Rear Gardens  
Workshop

**Ground Floor**  
Approx. 44.4 sq. metres (478.0 sq. feet)



**First Floor**  
Approx. 42.3 sq. metres (455.1 sq. feet)



**Call Tonbridge - 01732 770755 ■ [wardsofkent.co.uk](http://wardsofkent.co.uk)**

- Legal advice should be taken to verify fixtures/fittings, planning, alterations and/or lease details
- Appliances & services are untested, dimensions are approximate and floor plans are not to scale