



**Price**  
**£610,000**

**Freehold**

3x  2x  2x 

**Kings Road, Tonbridge,  
Kent, TN9**

**OVER 60?**

Secure this property  
for up to **59% less!**

*Wards*  
Helping you move forwards



## Main features

- Large garden perfect for families or pets
- Close to local schools and town centre
- Study ideal for home workers
- Two bathrooms upstairs and downstairs cloak room
- Driveway with parking for two cars

## Accommodation

### GROUND FLOOR

Hallway  
 Lounge: 12'0 x 11'10 (3.66m x 3.61m)  
 Kitchen: 20'0 x 8'3 (6.10m x 2.52m)  
 Dining Area: 11'3 x 8'10 (3.43m x 2.69m)  
 Utility Room/Cloakroom: 7'8 x 4'5 (2.34m x 1.35m)  
 Dining Room: 10'5 x 9'6 (3.18m x 2.90m)  
 Study Area: 13'6 x 6'5 (4.12m x 1.96m)

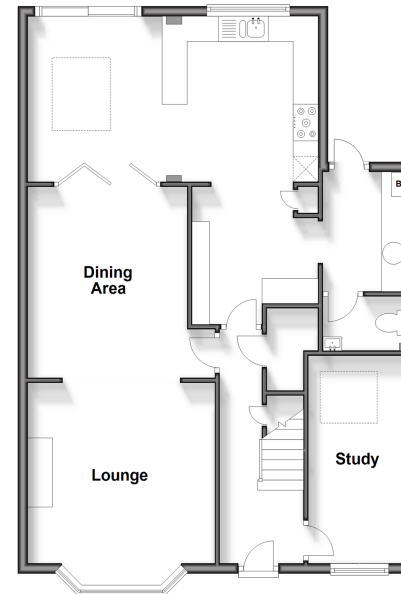
### FIRST FLOOR

Landing  
 Bedroom 1: 11'4 x 10'11 (3.46m x 3.33m)  
 Bedroom 2: 12'0 x 10'4 (3.66m x 3.15m)  
 Bedroom 3: 11'0 x 9'1 (3.36m x 2.77m)  
 Bathroom: 5'6 x 5'5 (1.68m x 1.65m)  
 Shower Room: 10'8 x 6'0 (3.25m x 1.83m)

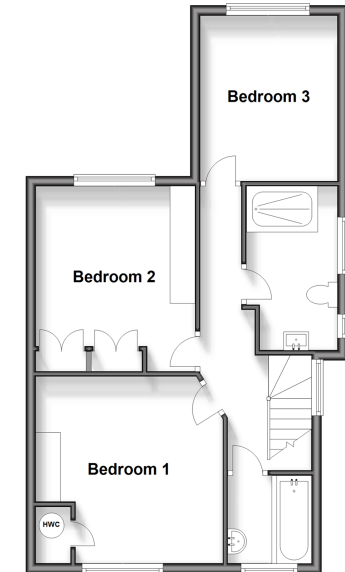
### OUTSIDE

Driveway  
 Rear Garden

**Ground Floor**  
 Approx. 77.6 sq. metres (835.7 sq. feet)



**First Floor**  
 Approx. 52.6 sq. metres (566.0 sq. feet)



Call Tonbridge - 01732 770755 ■ [wardsofkent.co.uk](http://wardsofkent.co.uk)

■ Legal advice should be taken to verify fixtures/fittings, planning, alterations and/or lease details  
 ■ Through a Homewise Home For Life Plan people aged 60+ can secure this property for up to 59% less, by purchasing a Lifetime Lease.

■ Appliances & services are untested, dimensions are approximate and floor plans are not to scale



14124806/20240718/MC/JW