



**Price**  
**£575,000**

**Freehold**

3x  1x  2x 

**Court Lane, Hadlow,  
Tonbridge, Kent, TN11**

*Wards*  
Helping you move forwards



## Main features

- Versatile spacious bungalow located in a quiet cul de sac
- Potential to adapt and improve the current layout
- Two garages and driveway
- Private rear garden
- Situated within walking distance of local amenities

## Accommodation

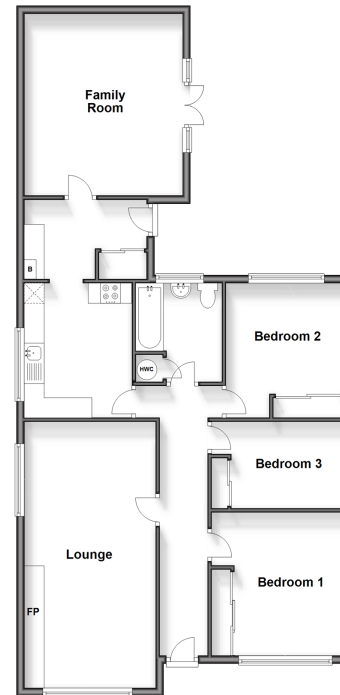
### GROUND FLOOR

- Hallway
- Lounge: 22'9 x 10'9 (6.94m x 3.28m)
- Kitchen: 11'2 x 9'3 (3.41m x 2.82m)
- Utility Room: 10'5 x 6'5 (3.18m x 1.96m)
- Family Room: 15'0 x 14'6 (4.58m x 4.42m)
- Bedroom 1: 11'3 x 10'9 (3.43m x 3.28m)
- Bedroom 2: 10'9 x 9'9 (3.28m x 2.97m)
- Bedroom 3: 10'9 x 6'9 (3.28m x 2.06m)
- Bathroom

### OUTSIDE

- Rear Garden
- Driveway
- Garage

**Ground Floor**  
Approx. 101.0 sq. metres (1092.9 sq. feet)



Call Tonbridge - 01732 770755 ■ [wardsofkent.co.uk](http://wardsofkent.co.uk)

■ Legal advice should be taken to verify fixtures/fittings, planning, alterations and/or lease details

■ Appliances & services are untested, dimensions are approximate and floor plans are not to scale



14133812/20240419/GA/GA