



OVER 60?

Secure this property
for up to **59% less!**

Price

£350,000

Leasehold

3x  2x  1x 

**Cornflower Court,
Sovereign Way,
Tonbridge, Kent, TN9**

Wards
Helping you move forwards



Main features

- **Spacious and bright first floor apartment in a popular development**
- **Modern open plan lounge/kitchen/dining room**
- **2 private balconies and secure underground parking**
- **New build warranties still in place until 2025**
- **Walking distance to the High Street, Waitrose and the station**

Accommodation

FIRST FLOOR

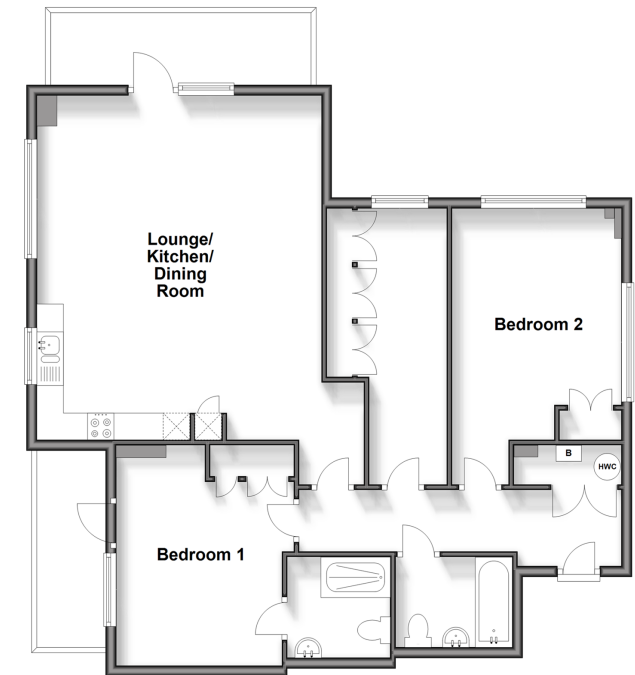
- Hallway
- Lounge/Kitchen/Dining Room: 21'1 x 17'6 (6.43m x 5.34m)
- Bedroom 1: 14'1 x 10'4 (4.30m x 3.15m)
- En Suite Shower Room: 14'1 x 10'4 (4.30m x 3.15m)
- Bedroom 2: 16'8 x 7'6 (5.08m x 2.29m)
- Bedroom 3: 13'6 x 10'0 (4.12m x 3.05m)
- Bathroom

OUTSIDE

- Allocated Parking
- Communal Garden

First Floor

Approx. 94.3 sq. metres (1014.6 sq. feet)



Call Tonbridge - 01732 770755 ■ wardsof Kent.co.uk

■ Legal advice should be taken to verify fixtures/fittings, planning, alterations and/or lease details
 ■ Through a Homewise Home For Life Plan people aged 60+ can secure this property for up to 59% less, by purchasing a Lifetime Lease.

■ Appliances & services are untested, dimensions are approximate and floor plans are not to scale



14133624/20240502/JW/JW