



**Price**  
**£650,000**

**Freehold**

4x  2x  3x 

**Burns Crescent,  
Tonbridge, Kent, TN9**

**OVER 60?**

Secure this property  
for up to **59% less!**

*Wards*  
Helping you move forwards



## Main features

- Beautifully presented family home within walking distance of the college and The Judd school
- Large corner plot with large front garden and landscaped rear garden
- Gated driveway for security
- Utility room and downstairs shower room as well as upstairs bathroom
- No onward chain ready to move into

## Accommodation

### GROUND FLOOR

Hallway  
 Lounge: 16'5 x 10'10 (5.01m x 3.30m)  
 Dining Area: 11'1 x 9'11 (3.38m x 3.02m)  
 Kitchen: 21'7 x 8'3 (6.58m x 2.52m)  
 Snug: 14'1 x 9'8 (4.30m x 2.95m)  
 Shower Room  
 Utility Room

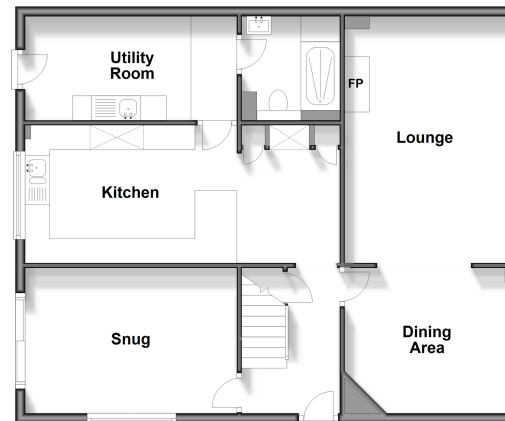
### FIRST FLOOR

Landing  
 Bedroom 1: 14'1 x 11'6 (4.30m x 3.51m)  
 Bedroom 2: 14'0 x 9'2 (4.27m x 2.80m)  
 Bedroom 3: 11'1 x 9'6 (3.38m x 2.90m)  
 Bedroom 4: 11'6 x 9'10 (3.51m x 3.00m)  
 Bedroom 5/Study: 11'8 x 8'2 (3.56m x 2.49m)  
 Bathroom

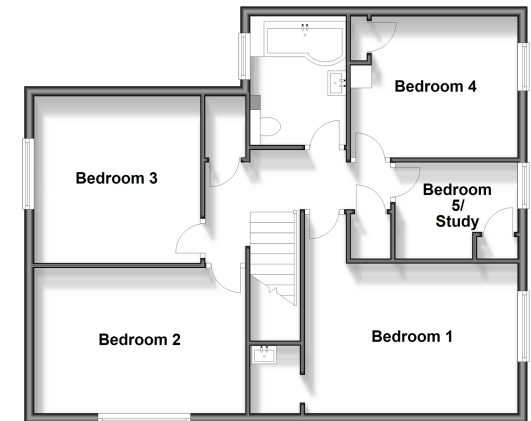
### OUTSIDE

Front & Rear Gardens  
 Driveway

**Ground Floor**  
 Approx. 79.8 sq. metres (859.3 sq. feet)



**First Floor**  
 Approx. 72.7 sq. metres (782.1 sq. feet)



Call Tonbridge - 01732 770755 ■ [wardsofkennt.co.uk](http://wardsofkennt.co.uk)

- Legal advice should be taken to verify fixtures/fittings, planning, alterations and/or lease details
- Through a Homewise Home For Life Plan people aged 60+ can secure this property for up to 59% less, by purchasing a Lifetime Lease.

■ Appliances & services are untested, dimensions are approximate and floor plans are not to scale



14133601/20240213/MC/KA