



OVER 60?

Secure this property
for up to **59% less!**

Price
£595,000

Freehold

4x  1x  2x 

Ashden Walk,
Tonbridge, Kent, TN10

Wards
Helping you move forwards



Main features

- **Extended family home with garage conversion**
- **Open plan living area with separate study and conservatory**
- **Large garden with outbuildings, gated pool area and a play area**
- **Double driveway for easy parking**
- **Sought after location ideal for families**

Accommodation

GROUND FLOOR

Hallway
 Lounge: 16'9 x 12'4 (5.11m x 3.76m)
 Kitchen: 11'4 x 7'11 (3.46m x 2.41m)
 Utility Room: 8'2 x 6'7 (2.49m x 2.01m)
 Cloakroom
 Conservatory: 14'11 x 9'10 (4.55m x 3.00m)
 Study: 8'6 x 8'2 (2.59m x 2.49m)

FIRST FLOOR

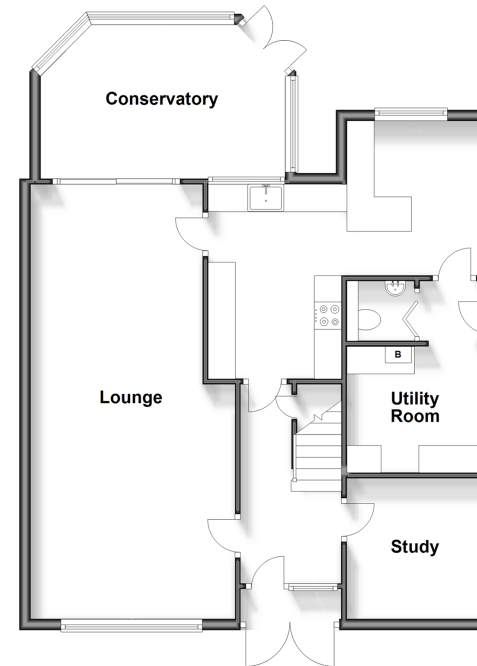
Landing
 Bedroom 1: 14'2 x 10'0 (4.32m x 3.05m)
 Bedroom 2: 11'5 x 9'11 (3.48m x 3.02m)
 Bedroom 3: 13'2 x 7'11 (4.02m x 2.41m)
 Bathroom
 Bedroom 4: 9'3 x 8'11 (2.82m x 2.72m)

OUTSIDE

Driveway
 Rear Garden
 Swimming Pool
 Outbuilding

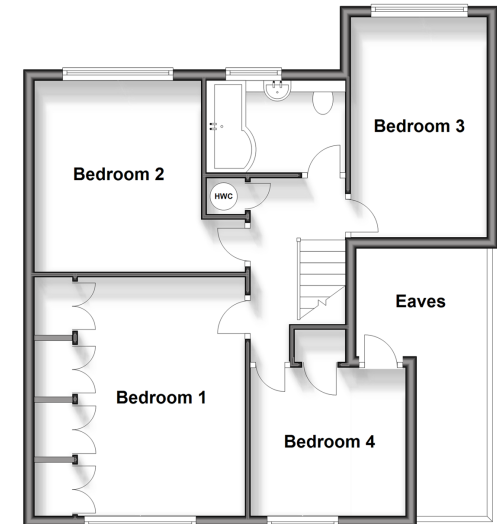
Ground Floor

Approx. 81.3 sq. metres (874.6 sq. feet)



First Floor

Approx. 58.8 sq. metres (632.9 sq. feet)



Call Tonbridge - 01732 770755 ■ wardsofken.co.uk

■ Legal advice should be taken to verify fixtures/fittings, planning, alterations and/or lease details
 ■ Through a Homewise Home For Life Plan people aged 60+ can secure this property for up to 59% less, by purchasing a Lifetime Lease.

■ Appliances & services are untested, dimensions are approximate and floor plans are not to scale



14128246/20240311/JW/JW