



Guide Price
£525,000

Freehold

3x  2x  2x 

**Mabledon Road,
Tonbridge, Kent, TN9**

OVER 60?

Secure this property
for up to **59% less!**

Wards
Helping you move forwards



Main features

- Beautifully presented family home in the sought after Meadow Lawn area
- Wonderful original features such as period fireplaces and exposed brickwork
- Sleek modern fitted kitchen with integrated appliances
- Easy to maintain rear garden with a workshop that could be used as a home office
- Walking distance to the High Street, station and Sussex Road Primary School

Accommodation

GROUND FLOOR

Hallway
 Lounge: 13'10 x 11'9 (4.22m x 3.58m)
 Dining Room: 12'1 x 11'9 (3.69m x 3.58m)
 Kitchen: 10'8 x 8'11 (3.25m x 2.72m)

FIRST FLOOR

Landing
 Bedroom 2: 11'9 x 8'7 (3.58m x 2.62m)
 Bedroom 3: 12'0 x 8'6 (3.66m x 2.59m)

SECOND FLOOR

Landing
 Bedroom 1: 19'10 x 11'3 (6.05m x 3.43m)
 En Suite Shower Room

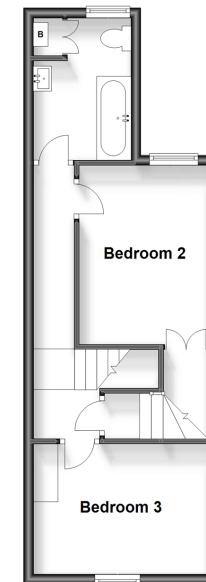
OUTSIDE

Rear Garden
 Workshop/Office

Ground Floor
 Approx. 37.1 sq. metres (398.8 sq. feet)



First Floor
 Approx. 35.0 sq. metres (376.3 sq. feet)



Second Floor
 Approx. 26.1 sq. metres (281.5 sq. feet)



Call Tonbridge - 01732 770755 ■ wardsofkent.co.uk

■ Legal advice should be taken to verify fixtures/fittings, planning, alterations and/or lease details
 ■ Through a Homewise Home For Life Plan people aged 60+ can secure this property for up to 59% less, by purchasing a Lifetime Lease.

■ Appliances & services are untested, dimensions are approximate and floor plans are not to scale



14126126/20240320/HG/GA