



Guide Price
£600,000

Freehold

4x  1x  2x 

**Higham Lane,
Tonbridge, Kent, TN10**

OVER 60?

Secure this property
for up to **59% less!**

Wards
Helping you move forwards



Main features

- **Fantastic family home in need of slight modernisation**
- **Large bright dual aspect lounge with original parquet flooring**
- **Potential to adapt the current layout to create your dream home**
- **Good sized garden with patio area - perfect for entertaining**
- **Walking distance to local schools & local amenities**

Accommodation

GROUND FLOOR

Hallway
 Lounge: 18'8 x 12'2 (5.69m x 3.71m)
 Dining Area: 14'8 x 8'5 (4.47m x 2.57m)
 Kitchen Area: 14'3 x 10'6 (4.35m x 3.20m)
 Downstairs Cloakroom

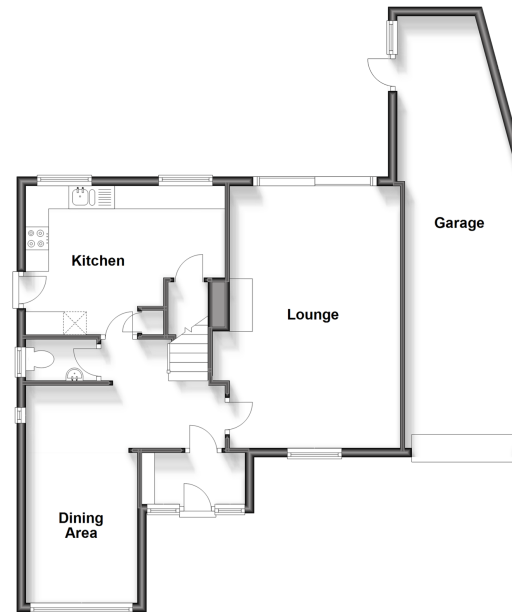
FIRST FLOOR

Landing
 Bedroom 1: 14'6 x 11'8 (4.42m x 3.56m)
 Bedroom 2: 11'9 x 10'2 (3.58m x 3.10m)
 Bedroom 3: 9'5 x 7'8 (2.87m x 2.34m)
 Bedroom 4: 8'4 x 8'2 (2.54m x 2.49m)
 Bathroom

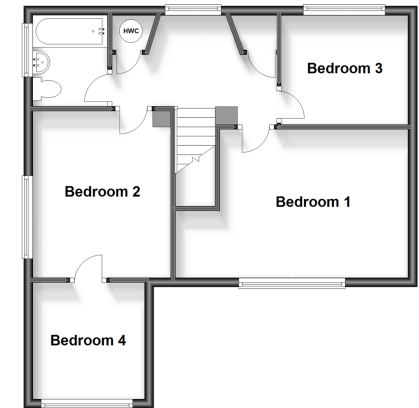
OUTSIDE

Garage
 Off Road Parking
 Front & Rear Gardens

Ground Floor
 Approx. 81.0 sq. metres (872.1 sq. feet)



First Floor
 Approx. 53.3 sq. metres (573.3 sq. feet)



Call Tonbridge - 01732 770755 ■ wardsof Kent.co.uk

■ Legal advice should be taken to verify fixtures/fittings, planning, alterations and/or lease details
 ■ Through a Homewise Home For Life Plan people aged 60+ can secure this property for up to 59% less, by purchasing a Lifetime Lease.

■ Appliances & services are untested, dimensions are approximate and floor plans are not to scale



14133569/20231123/HG/KA