



Price
£550,000

Freehold

3x  1x  2x 

**Wheatsheaf Way,
Tonbridge, Kent, TN10**

OVER 60?

Secure this property
for up to **59% less!**



Video Tour available

Wards

Helping you move forwards



Main features

- Well presented family home in popular residential location
- Bright and spacious throughout with potential to extend - subject to planning
- Good size sunny rear garden with patio area
- Newly fitted kitchen, hard floors and carpets throughout
- Great location, close to local shops, pharmacy, butcher, bakers and more

Accommodation

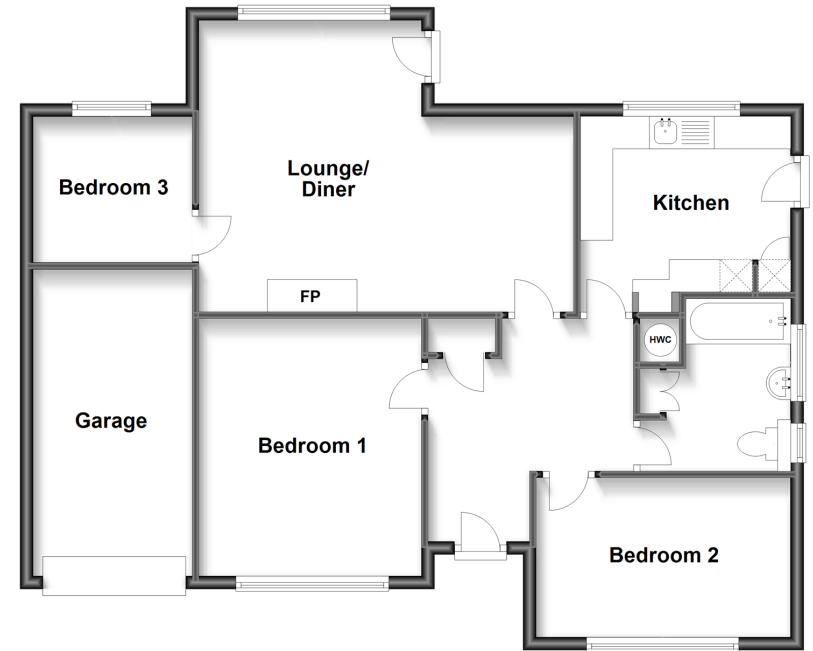
GROUND FLOOR

- Hallway
- Lounge/Diner: 19'2 x 14'9 (5.85m x 4.50m)
- Kitchen: 10'8 x 8'11 (3.25m x 2.72m)
- Bedroom 1: 13'0 x 11'6 (3.97m x 3.51m)
- Bedroom 2: 12'10 x 7'11 (3.91m x 2.41m)
- Bedroom 3: 7'10 x 7'4 (2.39m x 2.24m)
- Bathroom

OUTSIDE

- Garage: 18'9 x 7'10 (5.72m x 2.39m)
- Front & Rear Gardens
- Driveway
- Greenhouse

Ground Floor
Approx. 90.3 sq. metres (971.6 sq. feet)



Call Tonbridge - 01732 770755 ■ wardsofken.co.uk

■ Legal advice should be taken to verify fixtures/fittings, planning, alterations and/or lease details
 ■ Through a Homewise Home For Life Plan people aged 60+ can secure this property for up to 59% less, by purchasing a Lifetime Lease.

■ Appliances & services are untested, dimensions are approximate and floor plans are not to scale



14133190/20240318/MC/JW