

OVER 60?

Secure this property
for up to **59% less!**



Price

£500,000

Freehold

4x  2x  3x 

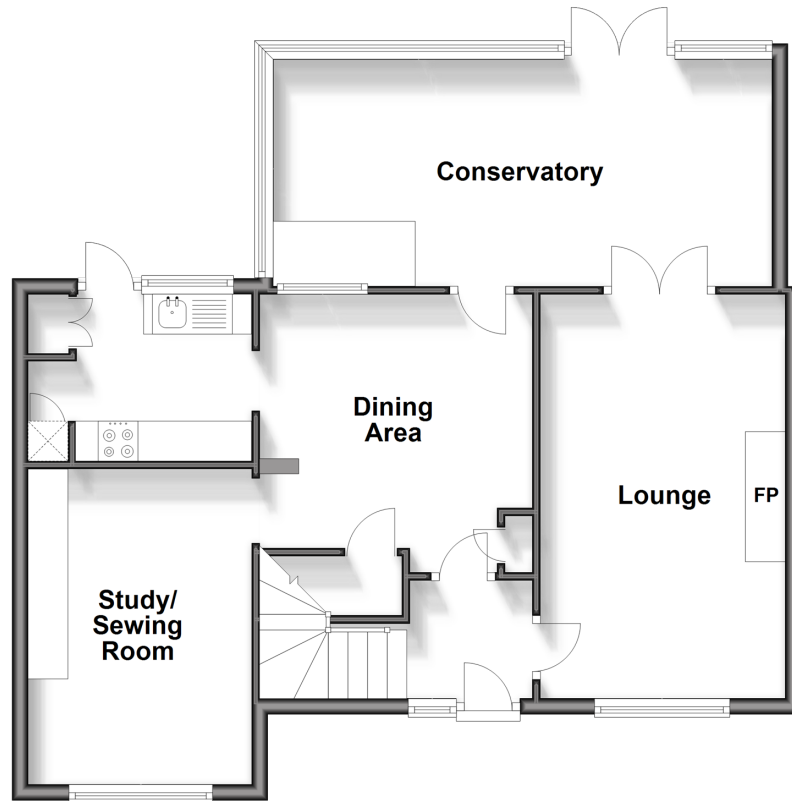
Ashford Road, Tenterden, Kent, TN30

Wards

Helping you move forwards

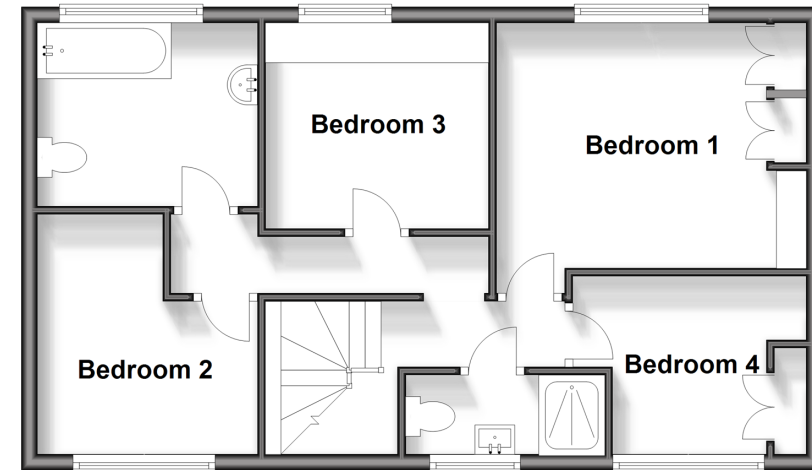
Ground Floor

Approx. 69.5 sq. metres (747.7 sq. feet)



First Floor

Approx. 52.0 sq. metres (560.2 sq. feet)



Accommodation

GROUND FLOOR

Hallway

Lounge: 17'4 x 10'4 (5.29m x 3.15m)

Dining Area: 11'8 x 11'3 (3.56m x 3.43m)

Study/Sewing Room: 12'10 x 9'3 (3.91m x 2.82m)

Kitchen: 9'6 x 7'6 (2.90m x 2.29m)

Conservatory: 21'0 x 9'7 (6.41m x 2.92m)

FIRST FLOOR

Landing

Bedroom 1: 12'10 x 9'11 (3.91m x 3.02m)

Bedroom 2: 9'6 x 9'4 (2.90m x 2.85m)

Bedroom 3: 9'3 x 8'3 (2.82m x 2.52m)

Bedroom 4: 9'7 x 7'4 (2.92m x 2.24m)

Bathroom: 9'3 x 6'8 (2.82m x 2.03m)

Shower Room: 8'1 x 3'1 (2.47m x 0.94m)

OUTSIDE

Front and Rear Gardens

Driveway

Workshop

Summer House: 19'10 x 9'5 (6.05m x 2.87m)



Main features

- ****Offers over £500,000****
- **Stunning 4 bedroom semi-detached house**
- **Versatile layout to include 3 reception rooms and a conservatory**
- **Large established rear garden complete with summer house**
- **Off road parking for multiple vehicles**



Nearest Schools

Primary Schools: Tenterden C of E Junior School 0.2 miles, St Michael's C of E Primary (Tenterden) 1.1 miles, High Halden C of E Primary 2.4 miles
Secondary Schools: Homewood School and Sixth Form Centre 0.4 miles, Benenden School 5.1 miles, Frewen



Transport Information

Train Stations: Appledore 5.9 miles, Pluckley 6.5 miles, Ham Street 7.1 miles, Ashford International 9.4 miles



Address

Ashford Road, Tenterden, Kent, TN30



Directions

For directions to this property please contact us.



Wards
Helping you move forwards

Call Tenterden Branch 01580 766002 ■ wardsof Kent.co.uk



- Legal advice should be taken to verify fixtures/fittings, planning, alterations and/or lease details
- Appliances & services are untested, dimensions are approximate and floor plans are not to scale
- Through a Homewise Home For Life Plan people aged 60+ can secure this property for up to 59% less, by purchasing a Lifetime Lease.

EPC RATING

CURRENT: D(68) POTENTIAL: C(79)

A horizontal bar representing the EPC rating. It is divided into four segments. The first segment is yellow and labeled 'D(68)'. The second segment is green and labeled 'C(79)'. The third and fourth segments are also green but unlabeled. To the right of the bar, the text 'CURRENT: D(68) POTENTIAL: C(79)' is displayed.

14007759/20240607/AQ/AQ