



Guide Price
£725,000

Freehold

4x  2x  2x 

**Front Road,
Woodchurch, Ashford,
Kent, TN26**

OVER 60?

Secure this property
for up to **59% less!**

Wards
Helping you move forwards

Accommodation

GROUND FLOOR

Hall

Cloakroom

Kitchen/Diner: 21'4 x 11'0 (6.51m x 3.36m)

Lounge Area: 21'2 x 10'4 (6.46m x 3.15m)

Sun Room Area: 21'3 x 11'0 (6.48m x 3.36m)

Laundry Room: 7'10 x 5'3 (2.39m x 1.60m)

Office/Gym/Bedroom 5: 15'10 x 8'11 (4.83m x 2.72m)

En-Suite Shower Room: 7'7 x 5'4 (2.31m x 1.63m)

FIRST FLOOR

Landing

Bedroom 2: 11'10 x 10'5 (3.61m x 3.18m)

Bedroom 3: 10'6 x 9'4 (3.20m x 2.85m)

Shower Room: 9'6 x 5'7 (2.90m x 1.70m)

Bedroom 4: 9'6 x 7'6 (2.90m x 2.29m)

Bedroom 1: 12'8 x 11'0 (3.86m x 3.36m)

OUTSIDE

Front Garden

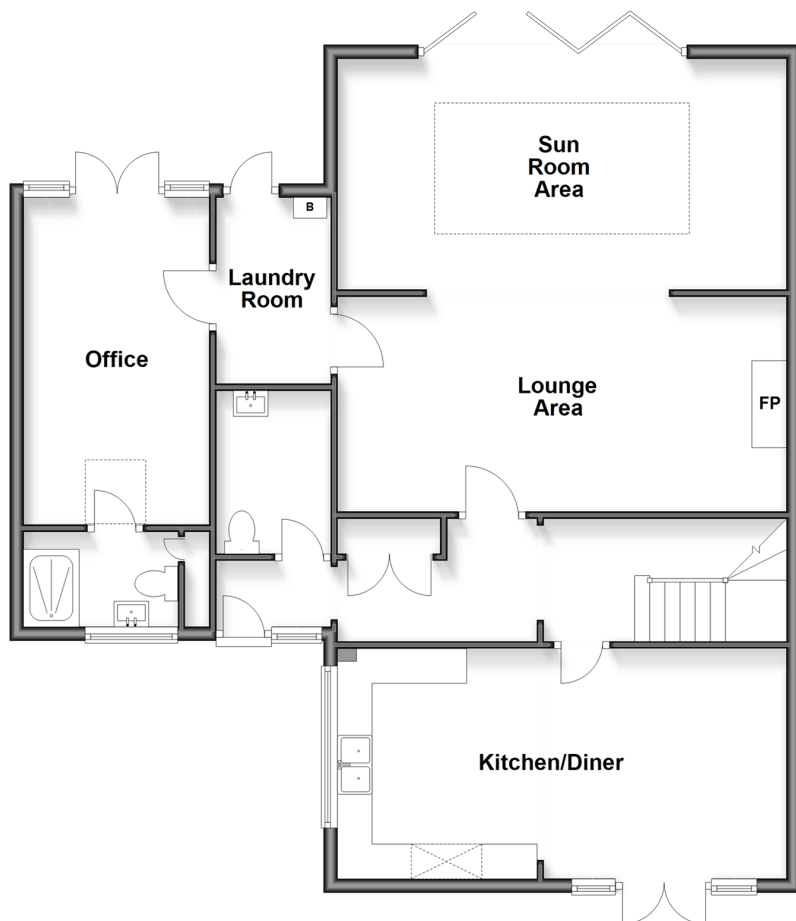
Driveway

Rear Garden

Workshop/Greenhouse

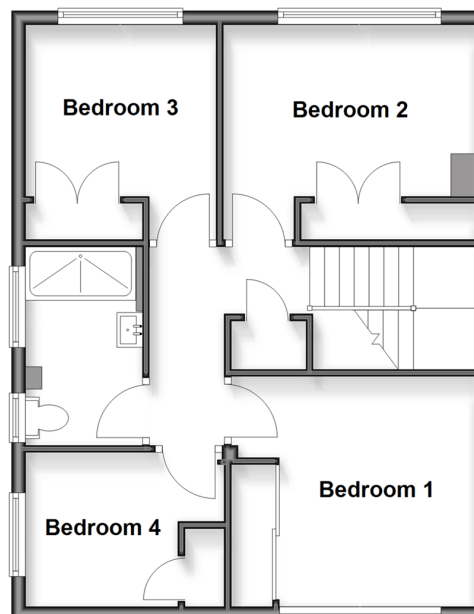
Ground Floor

Approx. 104.4 sq. metres (1124.2 sq. feet)



First Floor

Approx. 54.3 sq. metres (584.4 sq. feet)





Main features

- Beautifully presented 4 bedroom detached house
- Updated quality kitchen units with quartz counters and new appliances
- Huge open plan lounge with sky lantern
- Integral annex/office/gym or bedroom 5
- Electric gated drive with brand new block paving
- Generously sized rear garden with workshop/greenhouse and pond
- Chain Free



Nearest Schools

Primary Schools: Woodchurch Primary 0.8 miles, Hamstreet Primary 4.0 miles, Tenterden Junior School 4.4 miles, Secondary & Further Education Schools: Homewood School and Sixth Form Centre 4.3 miles, John Wallis C of E Academy, Ashford 7.0 miles, The Wyvern



Transport Information

Train Stations: Appledore 3.0 miles, Ham Street 3.3 miles, Pluckley 6.0 miles



Address

Front Road, Woodchurch, Ashford, Kent, TN26



Directions

For directions to this property please contact us.



Wards
Helping you move forwards

Call Tenterden Branch 01580 766002 ■ wardsofkent.co.uk



■ Legal advice should be taken to verify fixtures/fittings, planning, alterations and/or lease details ■ Appliances & services are untested, dimensions are approximate and floor plans are not to scale
■ Through a Homewise Home For Life Plan people aged 60+ can secure this property for up to 50% less, by purchasing a Lifetime Lease.



14008224/20251114/CD/AQ