



Guide Price
£625,000

Freehold

5x  3x  2x 

**Lossenham Lane,
Newenden, Kent, TN18**

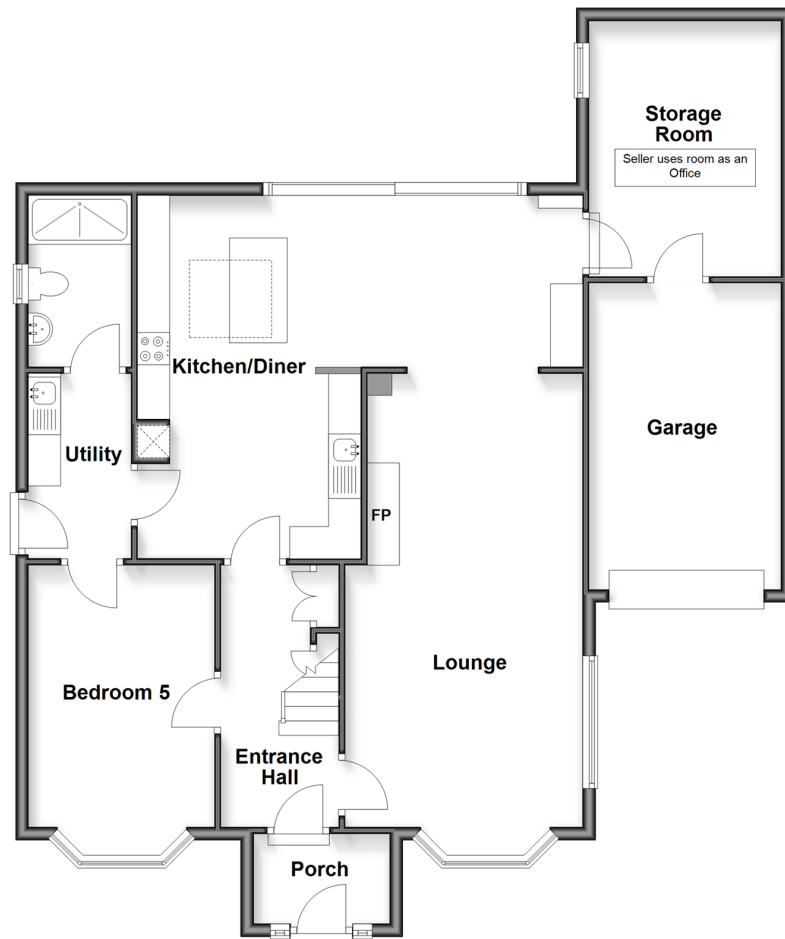
OVER 60?

Secure this property
for up to **59% less!**

Wards
Helping you move forwards

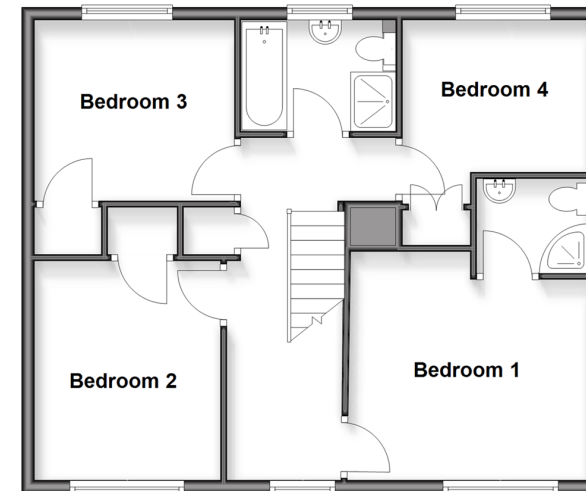
Split Level Ground Floor

Approx. 115.0 sq. metres (1237.5 sq. feet)



First Floor

Approx. 61.5 sq. metres (662.0 sq. feet)



Accommodation

GROUND FLOOR

Porch

Entrance Hall

Lounge: 25'5 x 11'10 (7.75m x 3.61m)

Kitchen/Diner: 22'1 at widest point x 19'1 (6.74m x 5.82m)

Utility: 9'4 x 5'7 (2.85m x 1.70m)

Shower Room: 8'5 x 5'3 (2.57m x 1.60m)

Bedroom 5/Living Area 2: 15'8 x 9'5 (4.78m x 2.87m)

Office/Storage Room: 13'0 x 9'5 (3.97m x 2.87m)

FIRST FLOOR

Landing

Bedroom 1: 12'2 x 9'9 (3.71m x 2.97m)

En-Suite Shower Room

Bedroom 4: 9'8 x 9'8 (2.95m x 2.95m)

Bathroom: 8'0 x 5'8 (2.44m x 1.73m)

Bedroom 3: 10'3 x 9'3 (3.13m x 2.82m)

Bedroom 2: 11'1 x 9'7 (3.38m x 2.92m)

OUTSIDE

Front and Rear Gardens

Garage: 15'9 x 10'4 (4.80m x 3.15m)

Driveway



Main features

- Spacious 5 bedroom detached house
- Versatile layout to suit multiple generations, downstairs bedroom with shower room
- Exceptional open plan kitchen/diner/family room, generous lounge with woodburning stove
- Gated driveway and garage with storeroom/work from home office to the rear
- Newenden village location with enviable far reaching countryside views



Nearest Schools

Primary Schools: Northiam C of E Primary 2.1 miles, Sandhurst Primary 2.3 miles, Rolvenden Primary 3.0 miles, Secondary & Further Education Schools: Frewen College 2.4 miles, Benenden School 6.6 miles, Homewood School and Sixth Form Centre 6.9 miles, High Weald Academy



Transport Information

Train Stations: Appledore 8.7 miles, Headcorn 10. miles, Ham Street 11. miles



Address

Lossenham Lane, Newenden, Kent, TN18



Directions

For directions to this property please contact us.



Call Tenterden Branch 01580 766002 ■ wardsofkent.co.uk



- Legal advice should be taken to verify fixtures/fittings, planning, alterations and/or lease details
- Through a Homewise Home For Life Plan people aged 60+ can secure this property for up to 50% less, by purchasing a Lifetime Lease.
- Appliances & services are untested, dimensions are approximate and floor plans are not to scale



14007500/20251003/AQ/AQ