



**Guide Price**  
**£535,000**

**Freehold**

5x  2x  3x 

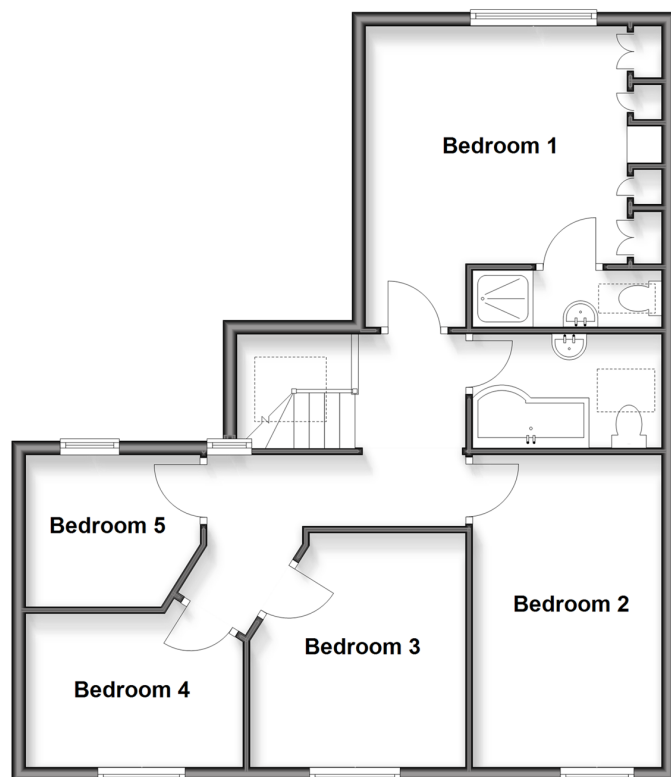
**Front Road,  
Woodchurch, Ashford,  
Kent, TN26**

**OVER 60?**

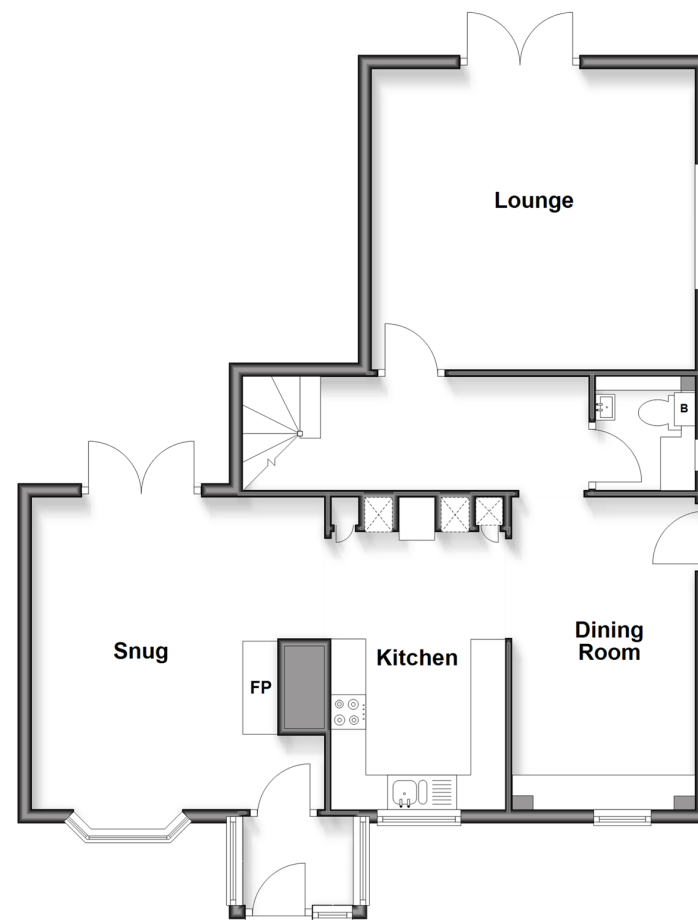
Secure this property  
for up to **59% less!**

*Wards*  
Helping you move forwards

**First Floor**  
Approx. 71.2 sq. metres (766.6 sq. feet)



**Ground Floor**  
Approx. 77.8 sq. metres (837.8 sq. feet)



## Accommodation

### GROUND FLOOR

Porch  
 Snug: 17'1 x 13'10 (5.21m x 4.22m)  
 Kitchen: 15'2 x 11'1 (4.63m x 3.38m)  
 Dining Room: 14'10 x 9'6 (4.52m x 2.90m)  
 Cloakroom  
 Lounge: 15'2 x 14'6 (4.63m x 4.42m)

### FIRST FLOOR

Landing  
 Bedroom 1: 14'11 x 12'0 (4.55m x 3.66m)  
 En-Suite Shower Room: 9'8 x 2'11 (2.95m x 0.89m)  
 Bathroom: 9'7 x 5'7 (2.92m x 1.70m)  
 Bedroom 2: 15'11 x 9'1 (4.85m x 2.77m)

Bedroom 3: 11'11 x 11'2 (3.63m x 3.41m)  
 Bedroom 4: 10'11 x 8'3 (3.33m x 2.52m)  
 Bedroom 5: 9'11 x 6'11 (3.02m x 2.11m)

### OUTSIDE

Front Garden  
 Driveway  
 Rear Garden





## Main features

- **Stunning 5 bedroom semi-detached house**
- **Free flowing layout to suit modern trends. Spacious lounge with access to the garden**
- **En-Suite shower room to bedroom 1**
- **Large front garden and driveway for multiple vehicles**
- **In addition to the rear garden there's an option to acquire an additional parcel**
- **Highly desirable location**



### Nearest Schools

Primary Schools: Woodchurch Primary 0.4 miles, St Michael's Primary (Tenterden) 3.6 miles, Hamstreet Primary 4.5 miles, Secondary & Further Education Schools: Homewood School and Sixth Form Centre 4.8 miles, John Wallis Academy, Ashford 7.3 miles, The



### Transport Information

Train Stations: Ham Street 4.5 miles, Appledore 5.4 miles, Pluckley 7.4 miles



### Address

Front Road, Woodchurch, Ashford, Kent, TN26



### Directions

For directions to this property please contact us.





Call Tenterden Branch 01580 766002 ■ [wardsofkent.co.uk](http://wardsofkent.co.uk)



■ Legal advice should be taken to verify fixtures/fittings, planning, alterations and/or lease details ■ Appliances & services are untested, dimensions are approximate and floor plans are not to scale  
■ Through a Homewise Home For Life Plan people aged 60+ can secure this property for up to 50% less, by purchasing a Lifetime Lease.



14008191/20250910/DS/AQ