



**OVER 60?**

Secure this property  
for up to **59% less!**

**Guide Price**

**£450,000**

**Freehold**

3x  1x  1x 

**Stonebridge Cottages,  
Front Road,  
Woodchurch, Ashford,  
Kent, TN26**

*Wards*  
Helping you move forwards





## Main features

- Stunning period 3-bedroom semi-detached house
- Planning permission for 2 story rear extension FB/2025/0170
- Large private sunny rear garden
- Driveway for multiple vehicles
- Highly desirable village location

## Accommodation

### GROUND FLOOR

Hall

Lounge: 19'1 x 10'1 (5.82m x 3.08m)

Dining Area: 9'11 x 9'1 (3.02m x 2.77m)

Kitchen: 10'7 x 9'0 (3.23m x 2.75m)

### FIRST FLOOR

Landing

Bedroom 1: 10'7 x 9'11 (3.23m x 3.02m)

Bedroom 2: 10'6 x 8'9 (3.20m x 2.67m)

Bathroom: 7'7 x 5'8 (2.31m x 1.73m)

Bedroom 3: 10'4 x 9'8 (3.15m x 2.95m)

### OUTSIDE

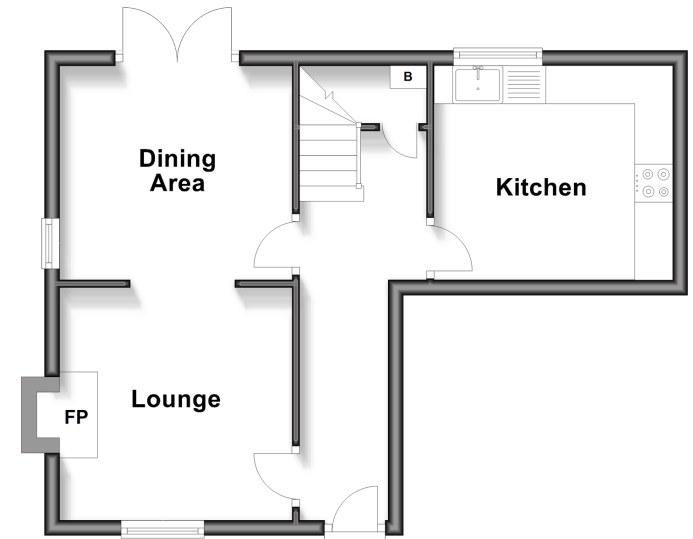
Front Garden

Rear Garden

Driveway

### Ground Floor

Approx. 36.4 sq. metres (392.2 sq. feet)



### First Floor

Approx. 37.7 sq. metres (406.2 sq. feet)



**Call Tenterden - 01580 766002 ■ [wardsofkent.co.uk](http://wardsofkent.co.uk)**

- Legal advice should be taken to verify fixtures/fittings, planning, alterations and/or lease details
- Appliances & services are untested, dimensions are approximate and floor plans are not to scale
- Through a Homewise Home For Life Plan people aged 60+ can secure this property for up to 50% less, by purchasing a Lifetime Lease.



14007790/20250813/CD/AQ