



**Guide Price**  
**£375,000**

**Freehold**

4x  1x  2x 

**Henley Fields, St.**  
**Michaels, Tenterden,**  
**Kent, TN30**

**OVER 60?**

Secure this property  
for up to **59% less!**

*Wards*  
Helping you move forwards





## Main features

- Versatile 4 bedroom extended semi-detached house
- Open plan kitchen/diner
- En-Suite to bedroom 1
- Private rear garden
- Front garden with drive for 2 vehicles
- Tucked away location

## Accommodation

### GROUND FLOOR

Porch  
Hall  
Lounge: 14'7 x 13'10 (4.45m x 4.22m)  
Kitchen/Diner: 17'5 x 8'7 (5.31m x 2.62m)  
Utility Room: 8'3 x 7'9 (2.52m x 2.36m)  
Cloakroom  
Study/Bedroom 5: 14'5 x 7'6 (4.40m x 2.29m)

### FIRST FLOOR

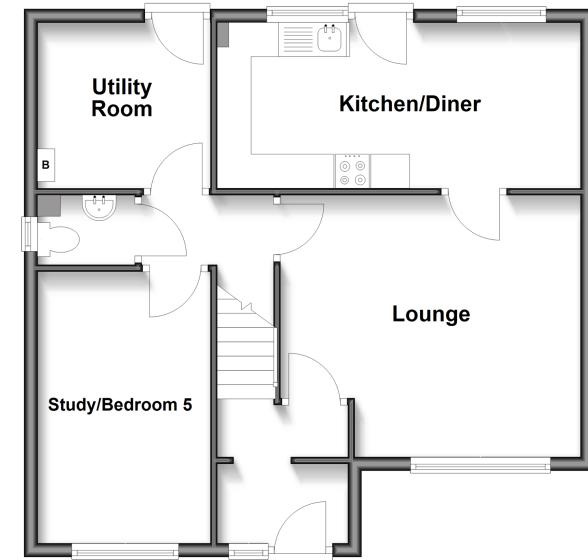
Landing  
Bedroom 1: 16'5 x 7'7 (5.01m x 2.31m)  
En-Suite Shower Room: 7'7 x 5'7 (2.31m x 1.70m)  
Bathroom: 7'2 x 6'0 (2.19m x 1.83m)  
Bedroom 2: 11'5 x 11'4 (3.48m x 3.46m)  
Bedroom 3: 10'6 x 8'6 (3.20m x 2.59m)  
Bedroom 4: 8'7 x 7'4 (2.62m x 2.24m)

### OUTSIDE

Front and Rear Garden  
Driveway

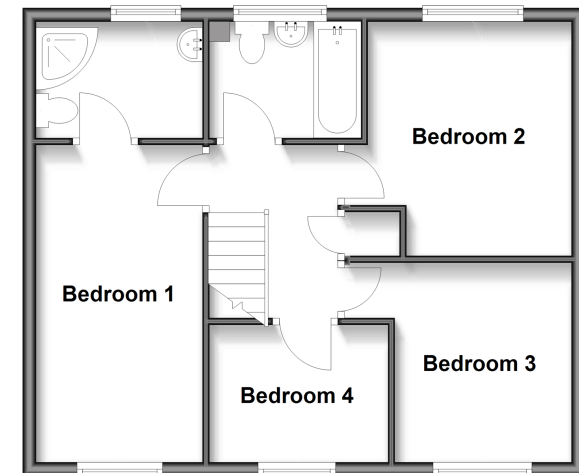
### Ground Floor

Approx. 56.9 sq. metres (612.9 sq. feet)



### First Floor

Approx. 51.1 sq. metres (550.4 sq. feet)



**Call Tenterden - 01580 766002 ■ [wardsofkent.co.uk](http://wardsofkent.co.uk)**

- Legal advice should be taken to verify fixtures/fittings, planning, alterations and/or lease details
- Appliances & services are untested, dimensions are approximate and floor plans are not to scale
- Through a Homewise Home For Life Plan people aged 60+ can secure this property for up to 59% less, by purchasing a Lifetime Lease.



14001595/20250809/CD/AQ