



Price
£275,000

Leasehold

2x  2x  1x 

**The Lindens, St. Benet's
Way, Tenterden, Kent,
TN30**

OVER 60?

Secure this property
for up to **59% less!**

Wards
Helping you move forwards



Main features

- **Spacious first floor purpose-built apartment**
- **Sociable open plan lounge/diner**
- **En-suite shower room to bedroom 1**
- **Allocated parking and secure phone entry system**
- **Communal gardens, chain free**
- **Town centre location**

Accommodation

FIRST FLOOR

Hallway

Kitchen: 8'11 x 8'6 (2.72m x 2.59m)

Lounge/Diner: 20'0 x 13'2 (6.10m x 4.02m)

Bathroom: 6'11 x 6'9 (2.11m x 2.06m)

Bedroom 2: 12'5 x 11'4 (3.79m x 3.46m)

Bedroom 1: 14'8 x 12'1 (4.47m x 3.69m)

En-Suite Shower Room: 7'1 x 5'1 (2.16m x 1.55m)

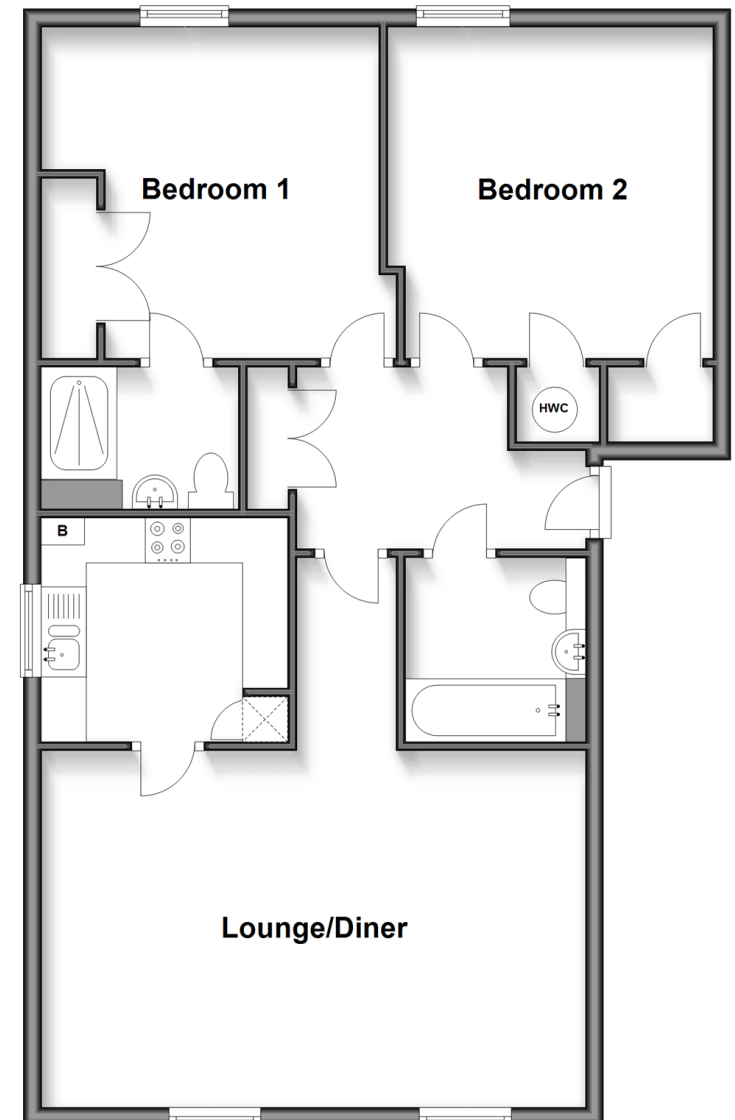
OUTSIDE

Parking Space

Communal Garden

First Floor

Approx. 79.0 sq. metres (850.4 sq. feet)



Call Tenterden - 01580 766002 ■ wardsofkent.co.uk

- Legal advice should be taken to verify fixtures/fittings, planning, alterations and/or lease details
- Appliances & services are untested, dimensions are approximate and floor plans are not to scale
- Through a Homewise Home For Life Plan people aged 60+ can secure this property for up to 50% less, by purchasing a Lifetime Lease.



14007609/20250910/DS/AQ