



Guide Price
£650,000

Freehold

5x  2x  2x 

**Homewood Road,
Tenterden, Kent, TN30**

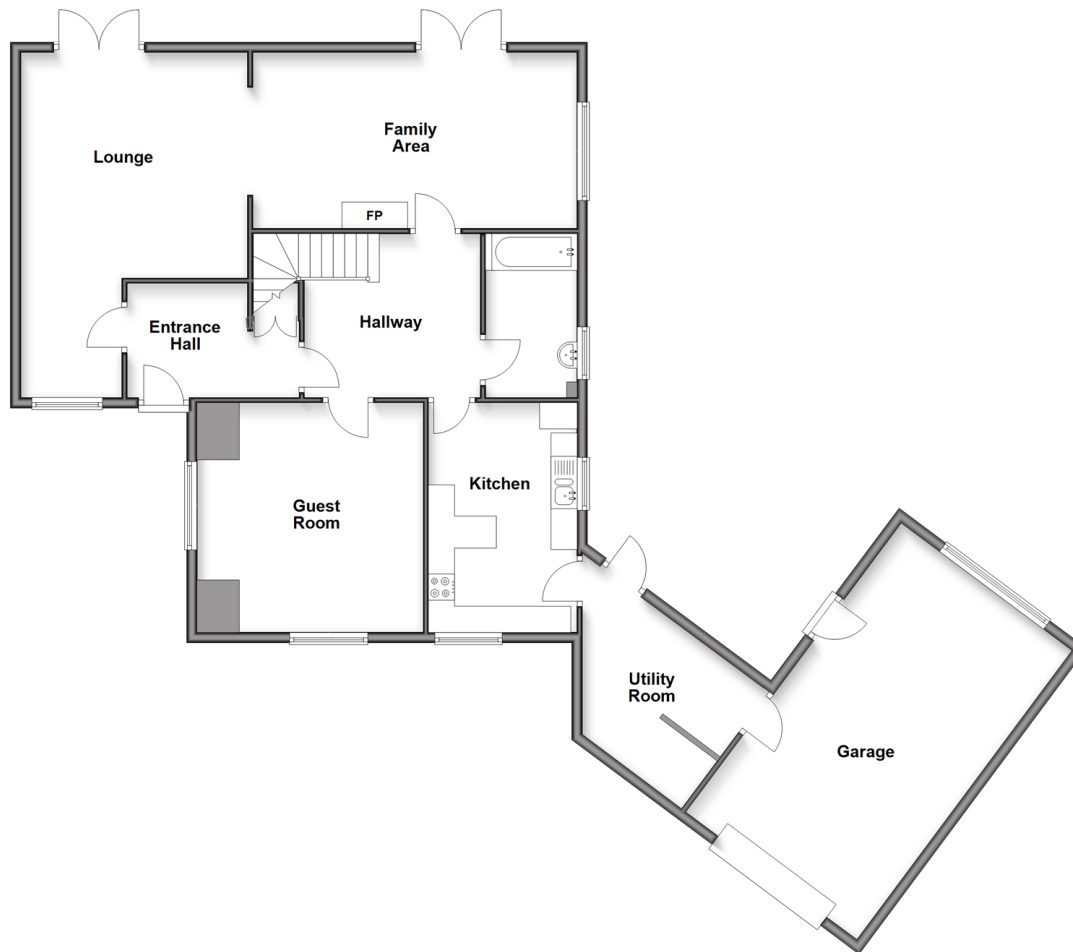
OVER 60?

Secure this property
for up to **59% less!**

Wards
Helping you move forwards

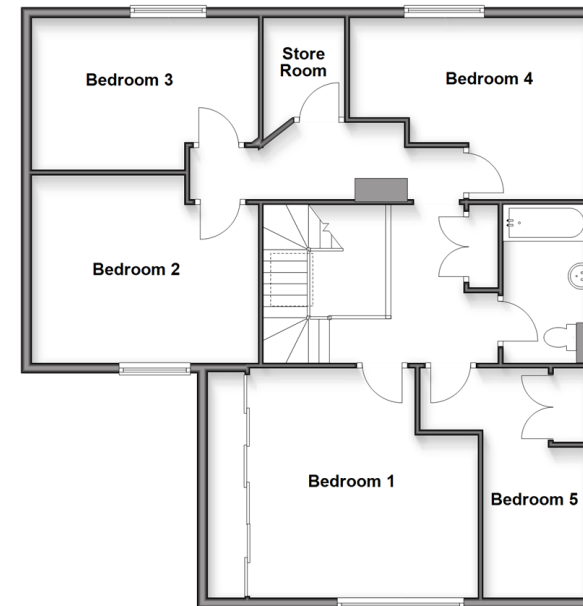
Ground Floor

Approx. 138.5 sq. metres (1490.7 sq. feet)



First Floor

Approx. 102.1 sq. metres (1098.6 sq. feet)



Accommodation

GROUND FLOOR

Entrance Hall

Lounge: 21'1 x 12'2 (6.43m x 3.71m)

Family Room: 20'9 x 14'0 (6.33m x 4.27m)

Inner Hallway

Bathroom: 9'1 x 5'10 (2.77m x 1.78m)

Kitchen: 13'8 x 9'4 (4.17m x 2.85m)

Utility Room: 9'4 x 8'7 (2.85m x 2.62m)

Guest Room: 14'3 x 14'1 (4.35m x 4.30m)

Garage: 22'10 x 11'0 (6.96m x 3.36m)

FIRST FLOOR

Landing

Bedroom 1: 14'2 x 12'8 (4.32m x 3.86m)

Bedroom 5: 14'3 x 12'0 (4.35m x 3.66m)

Family Bathroom: 9'0 x 5'6 (2.75m x 1.68m)

Bedroom 4: 13'5 x 6'1 (4.09m x 1.86m)

Storeroom: 8'1 x 5'11 (2.47m x 1.80m)

Bedroom 3: 13'11 x 9'4 (4.24m x 2.85m)

Bedroom 2: 13'10 x 11'1 (4.22m x 3.38m)

OUTSIDE

Front Garden

Driveway

Rear Garden



Main features

- Very spacious 5/6 bedroom detached house
- Versatile layout to suit multiple generations
- In need of some updating with huge scope to improve
- Enormous rear garden, full plot size of 0.5182 acres
- Garage and off-road parking
- Chain Free



Nearest Schools

Primary Schools: Tenterden Junior School 0.6 miles, St Michael's Primary (Tenterden) 0.7 miles, High Halden Primary 1.9 miles, Secondary & Further Education Schools: Homewood School and Sixth Form Centre 0.1 miles, Benenden School 5.4 miles, Cranbrook School 7.0 miles



Transport Information

Train Stations: Appledore 5.8 miles, Pluckley 6.0 miles, Ham Street 6.8 miles



Address

Homewood Road, Tenterden, Kent, TN30



Directions

For directions to this property please contact us.



Call Tenterden Branch 01580 766002 ■ wardsofkent.co.uk



- Legal advice should be taken to verify fixtures/fittings, planning, alterations and/or lease details
- Appliances & services are untested, dimensions are approximate and floor plans are not to scale
- Through a Homewise Home For Life Plan people aged 60+ can secure this property for up to 50% less, by purchasing a Lifetime Lease.



14008137/20250813/DS/AQ