

OVER 60?

Secure this property
for up to **59% less!**



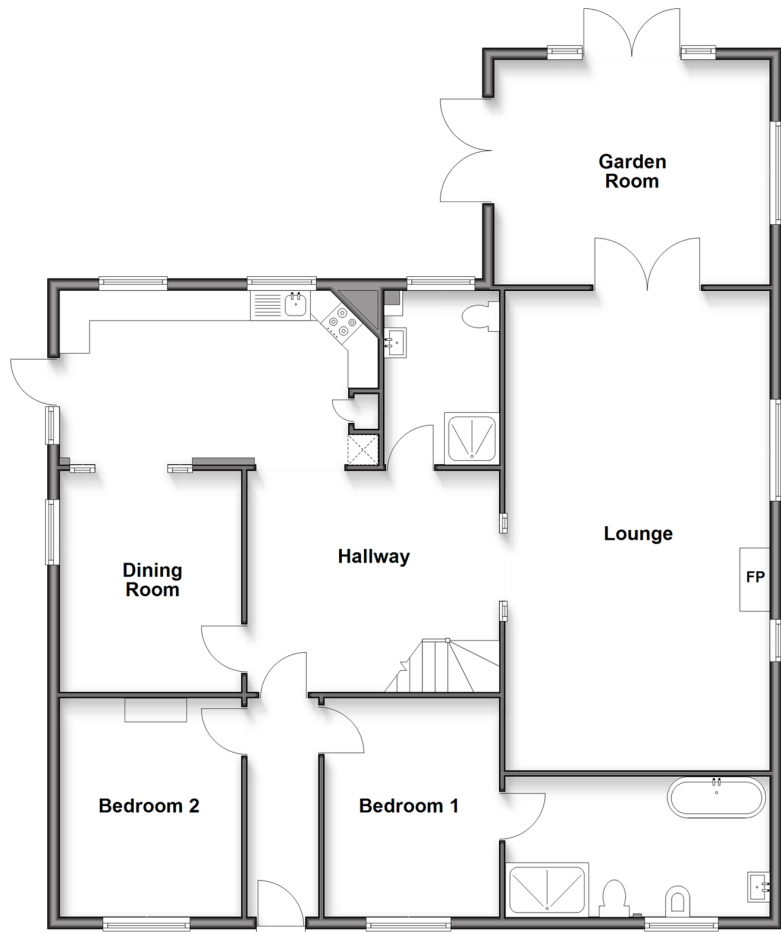
Price
£650,000
Freehold

3x  2x  2x 

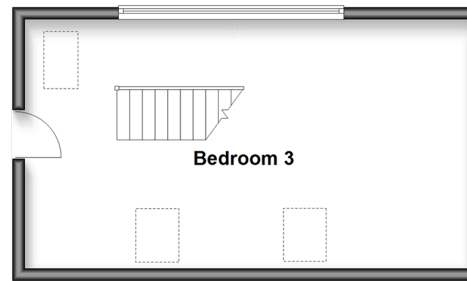
Beckley Road, Northiam, Rye, East Sussex,
TN31

Wards
Helping you move forwards

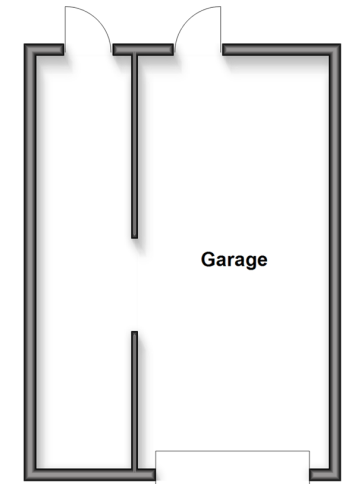
Ground Floor
Approx. 140.8 sq. metres (1515.3 sq. feet)



First Floor
Approx. 30.7 sq. metres (330.4 sq. feet)



Outbuilding
Approx. 33.6 sq. metres (361.2 sq. feet)



Accommodation

GROUND FLOOR

Entrance Hallway

Bedroom 1: 12'3 x 9'10 (3.74m x 3.00m)

En-Suite Bath/Shower Room: 15'0 x 7'9
(4.58m x 2.36m)

Bedroom 2: 12'0 x 9'10 (3.66m x 3.00m)

Hallway

Lounge: 26'2 x 14'6 (7.98m x 4.42m)

Garden Room: 15'3 x 12'3 (4.65m x 3.74m)

Bathroom: 9'5 x 6'7 (2.87m x 2.01m)

Kitchen: 17'11 x 9'6 (5.46m x 2.90m)

Dining Room: 12'1 x 9'10 (3.69m x 3.00m)

FIRST FLOOR

Bedroom 3: 24'4 x 14'1 (7.42m x 4.30m)

OUTSIDE

Garage

Driveway

Front Garden

Rear Garden



Main features

- Stunning spacious 3 bedroom detached chalet bungalow
- Surrounded by an area of outstanding natural beauty
- Envious garden room with vaulted ceiling
- Generous lounge with multi fuel burning stove
- Sweeping drive and detached garage



Nearest Schools

Primary Schools: Northiam C of E Primary 1.2 miles, Brede Primary 1.6 miles, Beckley C of E Primary 1.8 miles, Secondary & Further Education Schools: Frewen College 1.0 miles, Rye College 5.9 miles, Benenden School 7.1 miles, Homewood School and Sixth Form Centre 8.2



Transport Information

Train Stations: Battle 8miles, Appledore 10. miles, Ham Street 12. miles, Headcorn 13. miles



Address

Beckley Road, Northiam, Rye, East Sussex, TN31



Directions

For directions to this property please contact us.



Call Tenterden Branch 01580 766002 ■ wardsofkent.co.uk



- Legal advice should be taken to verify fixtures/fittings, planning, alterations and/or lease details
- Appliances & services are untested, dimensions are approximate and floor plans are not to scale
- Through a Homewise Home For Life Plan people aged 60+ can secure this property for up to 59% less, by purchasing a Lifetime Lease.



14008113/20250501/CD/AQ